

OAuth

:

-
- [OAuth Parasoft](#)
- [OAuth 2.0](#)
- [OAuth 1.0a](#)

OAuth (Open Authorization)

OAuth () OAuth

OAuth 2.0 1.0a OAuth Web : <https://oauth.net/2/>

() () () OAuth 3

- 1.
2. OAuth URL
- 3.

OAuth Parasoft

Parasoft Web OAuth 1.0a 2.0 (2)HTTP [OAuth] OAuth 1.0a OAuth OAuth 2.0 REST Client [] []

OAuth 2.0

OAuth 2.0 RFC

- (Web)
-
-
-

2 [Web \(\)](#)

OAuth 2.0 <https://oauth.net/2/grant-types/>

Web ()

confidential public URL URL OAuth 2.0 Framework <https://tools.ietf.org/html/rfc6749#section-4.1>

1. [] > [(.tst)]
2. [Web] > [Web]
3. [] []
4. [] OAuth URL
5. [] URL URL
- 6.
7. [] > [] [] > [HTTP]

Choose Browser Data to Send to Output

The Browser Testing Tool generates two types of data for use with output tools.

Use the following as input:

Browser contents (rendered HTML)

HTTP traffic

8. URL

Choose Request

Choose a browser request to validate or stub.

1. https://foursquare.com/oauth2/authenticate?client_id=INQZINRVNXIYILNGBCW...
2. <http://www.iana.org/domains/example/?code=AY1HKTU5KC2CW4WMAKIL2T3...>
3. http://www.iana.org/_css/reset-fonts-grids.css
4. http://www.iana.org/_css/screen.css
5. http://www.iana.org/_js/common.js
6. http://www.iana.org/_css/print.css
7. http://www.iana.org/_js/corners.js
8. http://www.iana.org/_js/prototype.js

9. Text Data Bank

1. REST Client URL URL 1 code Text Data Bank

Resource Payload HTTP Options Success Criteria

Input Mode: Form

Protocol: Fixed http https

Host: Fixed foursquare.com

Port: Fixed

Parameters

Path Query

View: Table

Parameters	Value
client_id	INQZINRVNXIYILNGBCWBUBAMNZCQGDXOZ...
client_secret	YKU12QENAPOW3H42EQWQXPFE3CPCRXAYVN4K...
grant_type	authorization_code
redirect_uri	http://www.iana.org/domains/example/
code	{FOURSQUARE_CODE}

2. Data BankTextJSON REST Client

REST API REST Client URL URL URL 1 oauth_token

Resource Payload HTTP Options Success Criteria

Input Mode: Form

Protocol: Fixed http https

Host: Fixed api.foursquare.com

Port: Fixed

Parameters

Path Query

View: Table

Parameters	Value
oauth_token	{FOURSQUARE_ACCESS_TOKEN}

OAuth 2.0 Framework <https://tools.ietf.org/html/rfc6749#section-4.4>

1. REST Client Obtain Access Token
2. [] [] POST
3. URL
4. [] [] [URL]
5. [] []

client_id	HTTP	
client_secret	HTTP [HTTP] > [] > [HTTP]	
grant_type	client_credentials	Yes
scope	https://oauth.net/2/scope/	
audience	URI	

6. REST Client :

```

HTTP/1.1 200 OK
Content-Type: application/json;charset=UTF-8

{
  "access_token": "2YotnFZFEjrlzCsicMWpAA",
  "token_type": "Bearer",
  "expires_in": 3600,
  "scope": "read_something"
}

```

7. REST Client []
8. [] > [] > [JSON Data Bank][[]]
9. access_token token_type access_token token_type

JSON

1. REST Client
2. [] REST
3. [HTTP] [HTTP]

4. Authorization \${token_type} \${access_token} HTTP \${token_type} \${access_token} JSON Data Bank
5. HTTP
Authorization: Bearer 2YotnFZFEjrlzCsicMWpAA

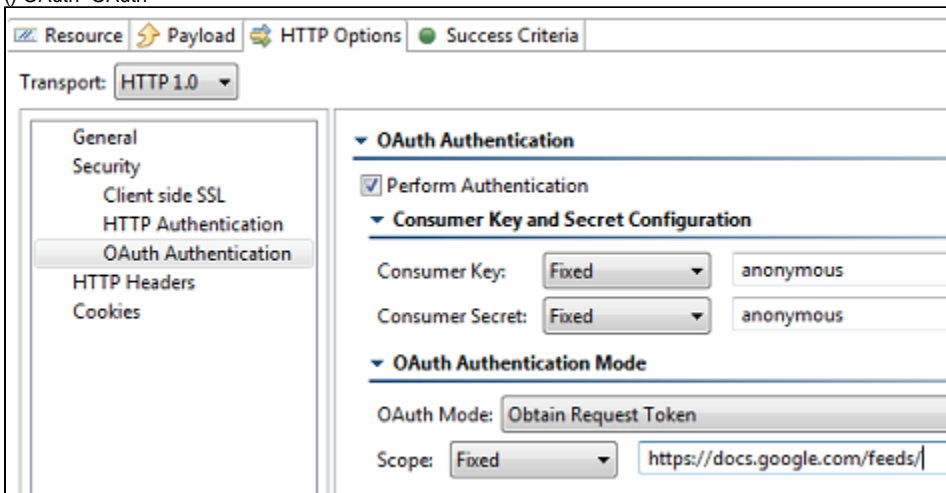
OAuth 1.0a

OAuth 1.0a

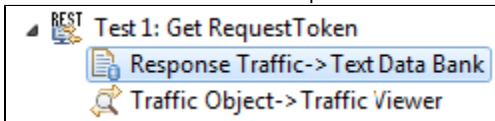
- 1.
- 2.
3. OAuth

REST Client Messaging Client

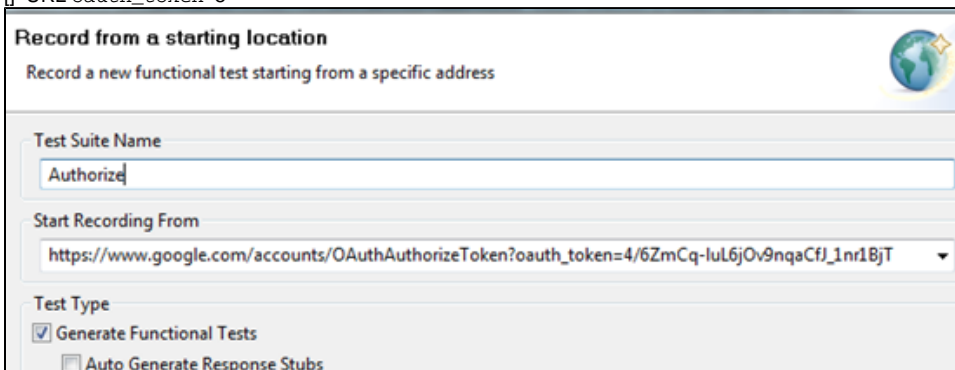
1. REST Client
2. [HTTP] [HTTP1.0 HTTP1.1]
3. [OAuth] [OAuth]
4. [] []
5. [OAuth] []
6. () []
7. () OAuth OAuth



8. Text Data Bank REST Client Response Traffic oauth_token



9. [] > [] > [(-.tst)]
10. []
11. [Web] > [Web] []
12. [] []
13. [] URL oauth_token 8



14. /
- 15.
16. Browser Data Bank Browser ContentsHTML

17. Browser Playback Text Data Bank 7\${varName}

▼ Name
Name: Navigate to *\${WWW_GOOGLE_COM_BASE_URL}/accounts/c Use Default Name

▼ Tool Settings
Pre-Action Browser Contents User Action Wait Conditions Pre-Action HTML

Action: Navigate

URL: Fixed \${WWW_GOOGLE_COM_BASE_URL}/accounts/OAuthAuthorizeToken?oauth_token=\${GOOGLE_REQUEST_TOKEN}

Window: Custom

1. REST Client
2. [HTTP] [] HTTP1.0 HTTP1.1
3. [OAuth] [] OAuth
4. [] []
5. [OAuth] []
6. Text Data Bank [] []
7. Browser Data Bank []
8. Text Data Bank REST Client Response Traffic (oauth_token) (oauth_token_secret)

OAuth

1. REST Client
2. [HTTP] [] HTTP1.0 HTTP1.1
3. [OAuth] [] OAuth
4. [] []
5. [OAuth] [*OAuth]
6. Text Data Bank [] []
- 7.