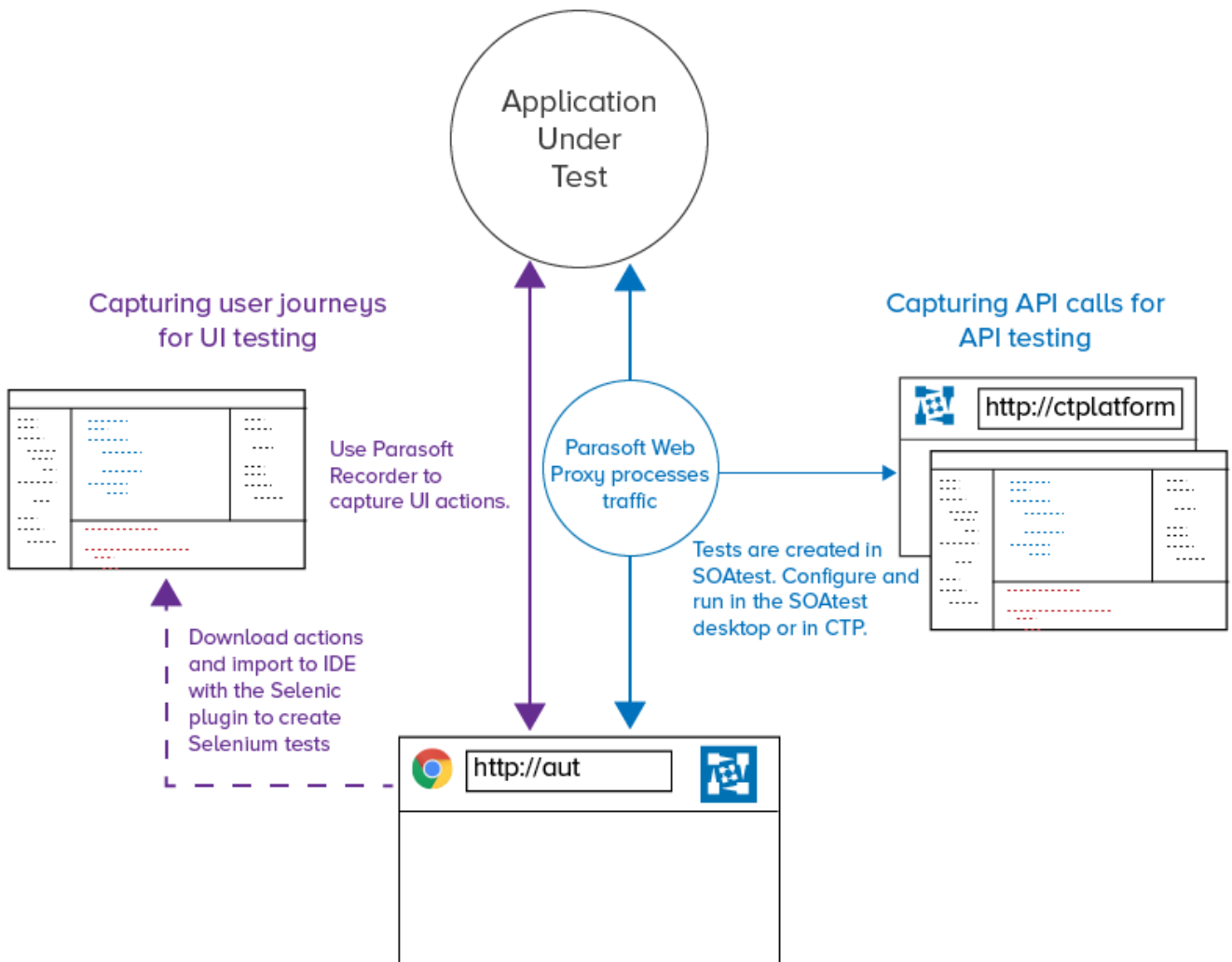


Parasoft Recorder

-
-
-
- [Web Proxy](#)
-

Parasoft Recorder Web API API CTP SOAtest / API [Parasoft Selenic](#) Selenium Parasoft Recorder :

- Parasoft Recorder Chrome : Chrome /SOAtest Web API SOAtest
- SOAtest Web Proxy: SOAtest .tst
- Parasoft Root Certificate Authority: CA HTTPS



- Google Chrome
- API SOAtest Web Proxy

SOAtest Web Proxy

- Web 40090

API

- SOAtest 9.10.5

Selenium

- Selenic [System Requirements](#)

Parasoft Recorder SOAtest API Parasoft Selenic Selenium Parasoft (parasoft-user@techmatrix.co.jp)

API

SOAtest Advanced Test Generation

- Advanced Test Generation Desktop: SOAtest
- Advanced Test Generation 5 Users: 5 SOAtest
- Advanced Test Generation 25 Users: 25 SOAtest
- Advanced Test Generation 100 Users: 100 SOAtest

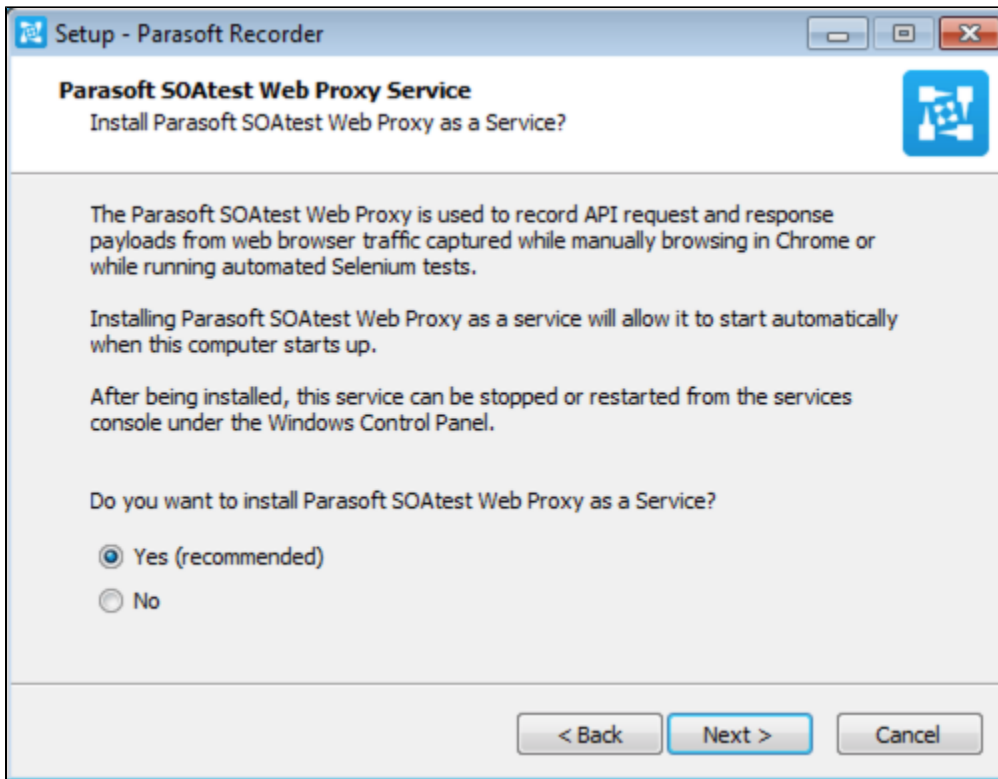
Selenium

Parasoft Selenic

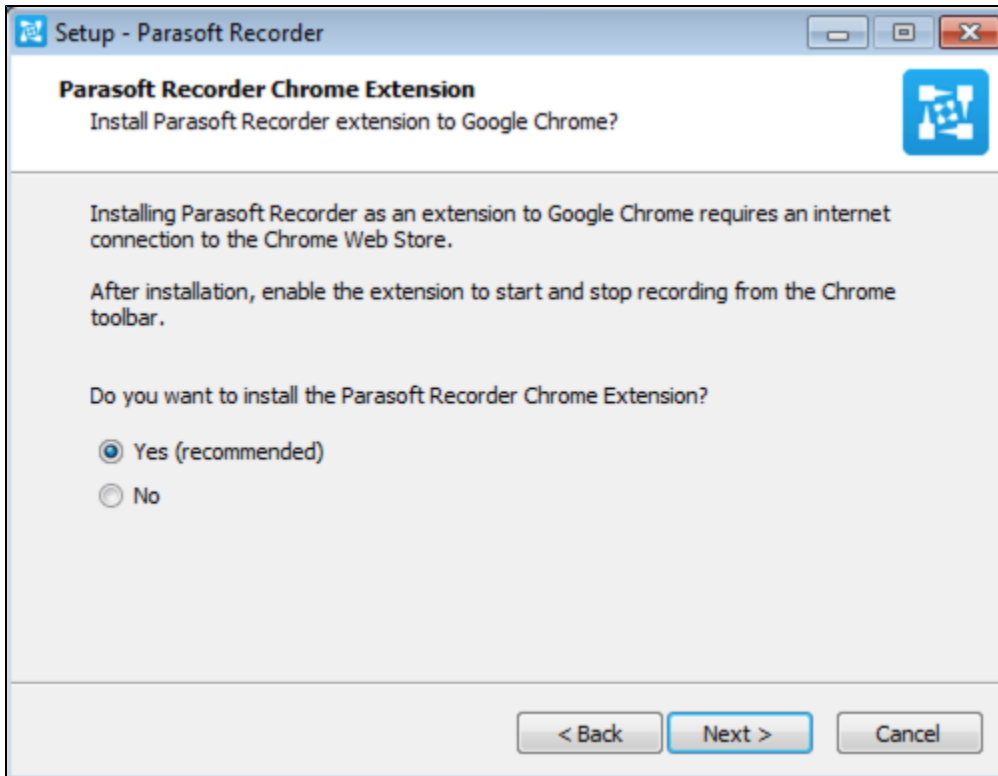
Windows parasoft_recorder_<version>_win32.exe Mac OS parasoft_recorder_<version>_macos.dmg Mac OS .dmg **[Open With] > [Installer]**

[Manual Installation](#)

Windows Parasoft SOAtest Web Proxy Windows Windows SOAtest Web Proxy Windows ([Starting the Web Proxy](#)) .jar ([Manually Starting the Web Proxy](#))

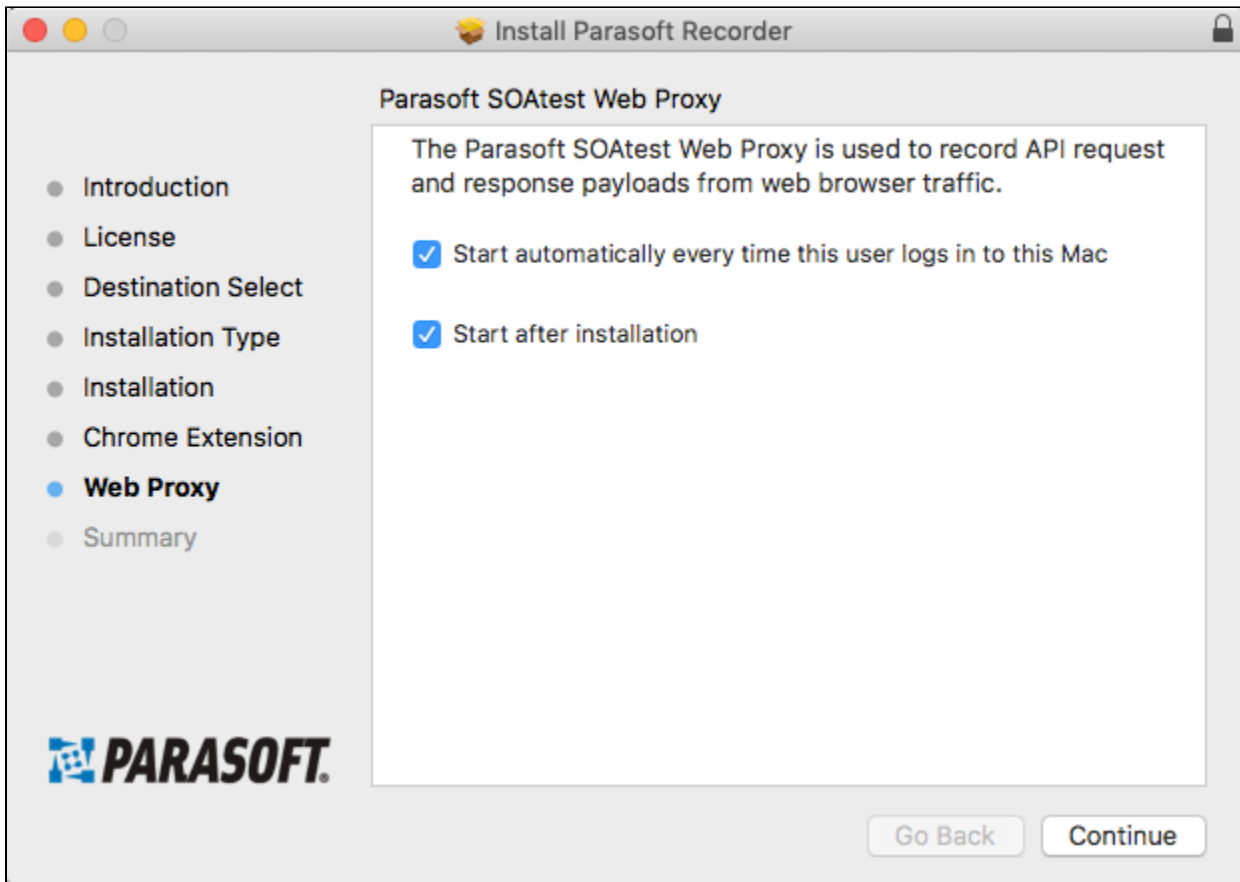


Windows Mac Google Chrome Parasoft Recorder (Windows)Google Chrome [Manual Installation](#)

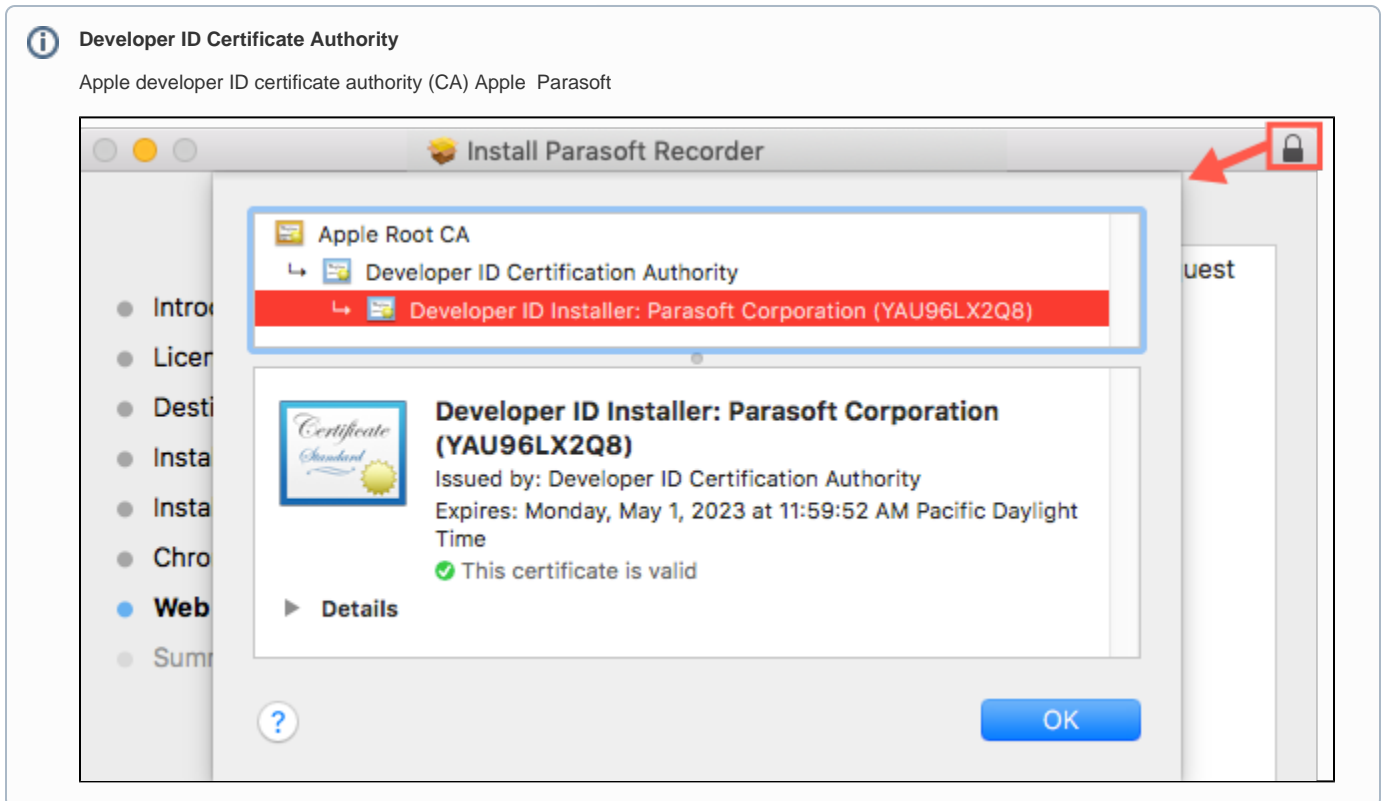
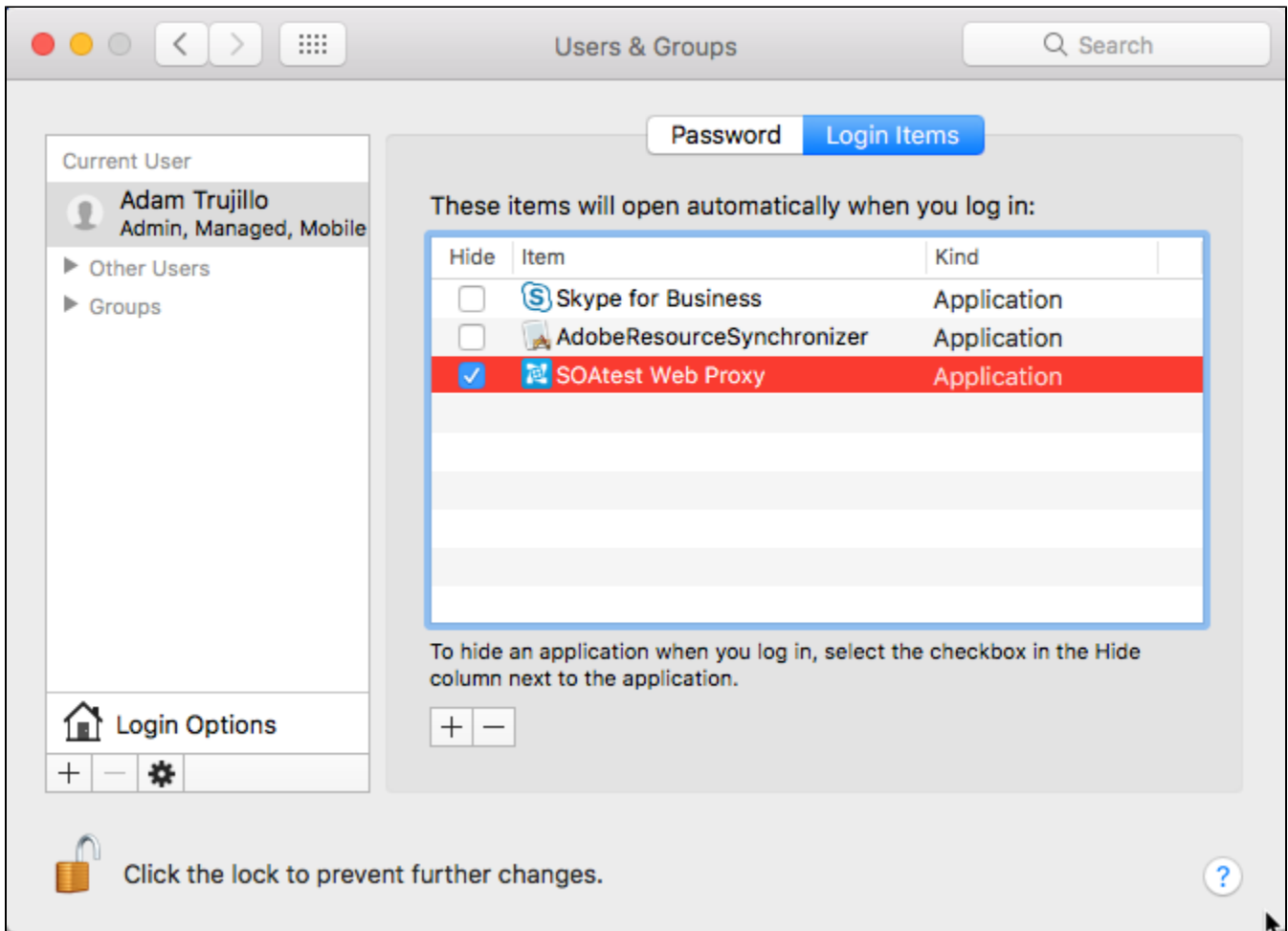


Parasoft Root Certificate Authority CA HTTPS SOAtest/Virtualize CA CA (Installing the Parasoft Root Certificate Authority)

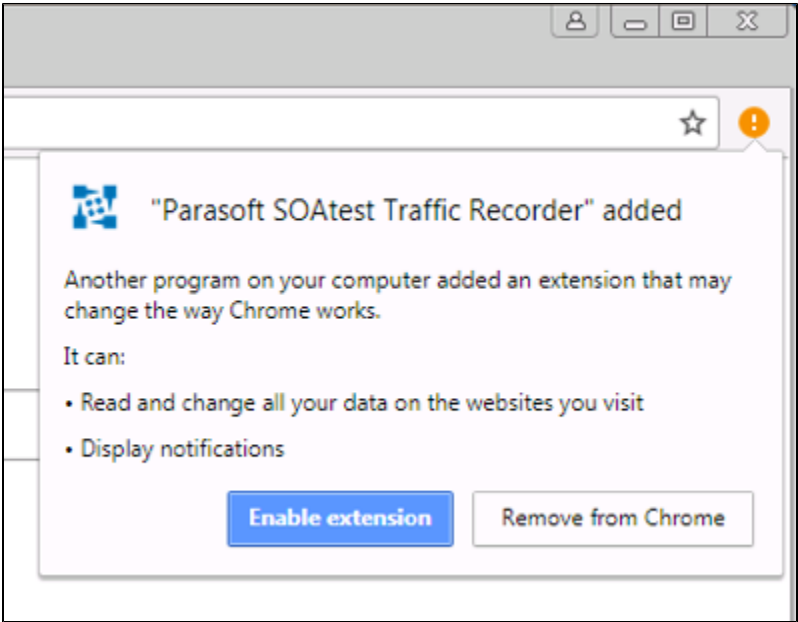
Mac OS Web Proxy



[System Preferences] > [Users & Groups] > [Login Items] Web Proxy



Chrome

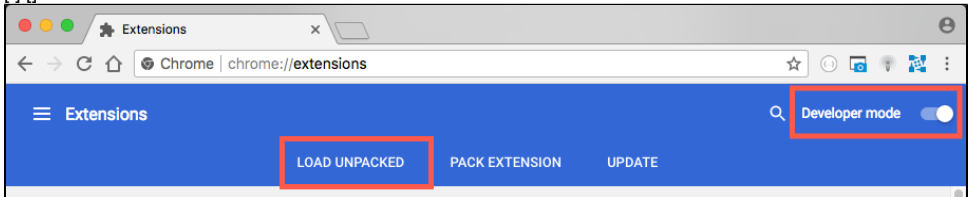


Parasoft SOAtest Web Proxy (Starting the Web Proxy) Using the Browser Extension SOAtest

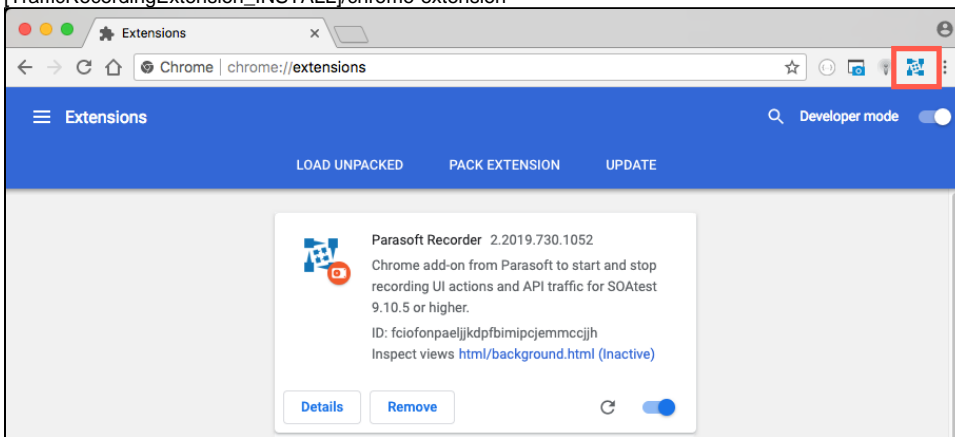
Windows Windows Mac OS **Uninstall Parasoft Recorder Generator** Mac OS Applications/Parasoft

Parasoft Recorder

1. TrafficRecordingExtension.zip (Parasoft)
2. Parasoft SOAtest Web Proxy
3. Chrome (<chrome://extensions>)
4. [] []



5. [TrafficRecordingExtension_INSTALL]/chrome-extension



API Parasoft SOAtest Web Proxy SOAtest (Starting the Web Proxy)SOAtest Web Parasoft Recorder Parasoft SOAtest Web Proxy SOAtest

Parasoft Root Certificate Authority

HTTPS Parasoft Root Certificate Authority

Windows

Parasoft Root Certificate Authority SOAtest Windows Parasoft Recorder -installcertificate soatestcli :

```
soatestcli -installcertificate
```

SOAtest Chrome

1. Chrome (<chrome://settings>)[]
2. [] []
3. [] []
4. [] []
5. [TrafficRecordingExtension_INSTALL]/parasoft.cer []
6. []
7. [Finish] Parasoft Root Certificate Authority

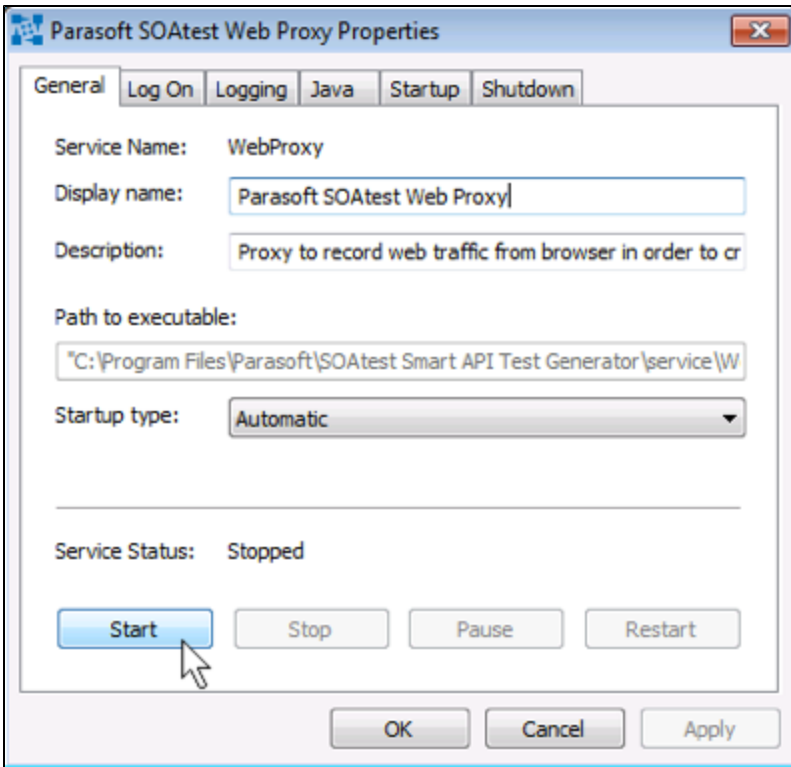
Mac OS

1. Chrome (<chrome://settings>)[]
2. [] [] Keychain Access
3. Keychains [login] Category [Certificates]
4. [File] > [Import items] parasoft.cer in the [TrafficRecordingExtension_INSTALL]
5. Parasoft Root Certificate Authority [Get Info]
6. [Trust] [When using this certificate] [Always Trust]
- 7.

Web Proxy

Parasoft Web Proxy Windows SOAtest Web Proxy

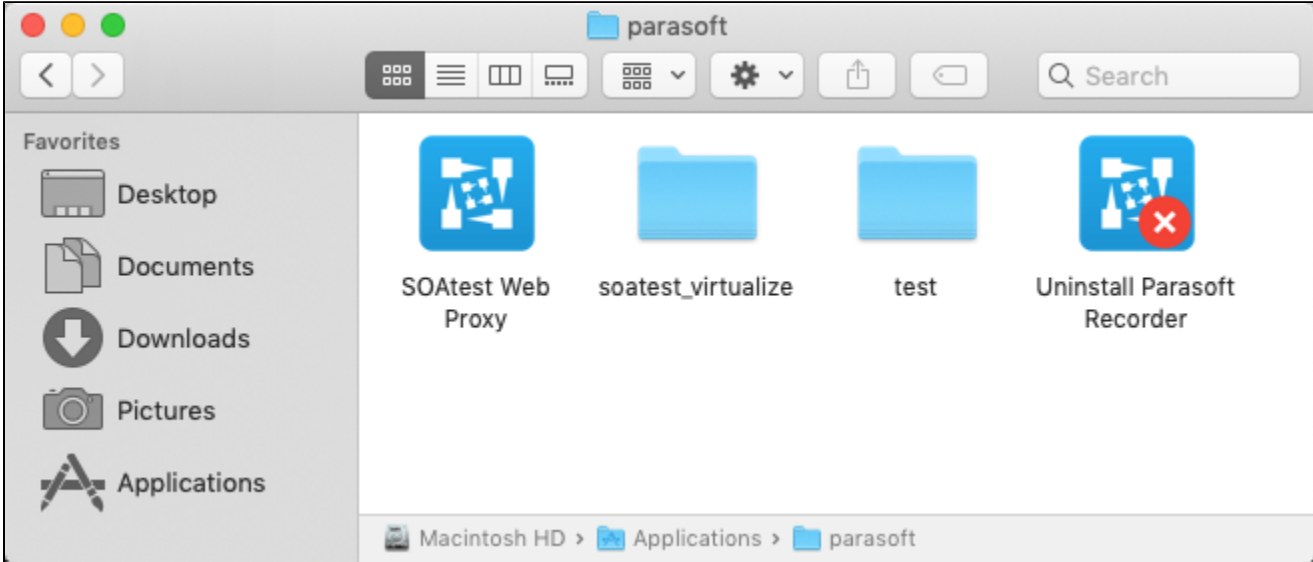
1. Windows [SOAtest Web Proxy] ()
2. [] []



Web Proxy API 40090 API 40443 Web Proxy [Parasoft Recorder](#)

[]

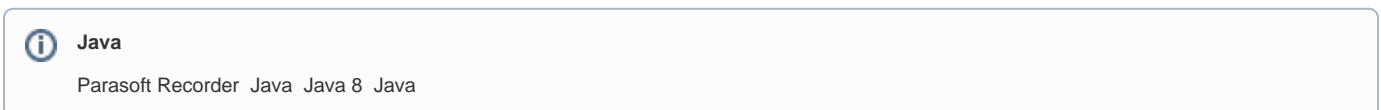
Mac OS Web Proxy Applications/Parasoft



Web Proxy

Web Proxy Jar java

```
%INSTALLDIR%/jre/bin/java -jar com.parasoft.traffic.proxy.jar
```



Web Proxy API 40090 40443 [Parasoft Recorder](#)

Web Proxy

--version (-v) Jar :

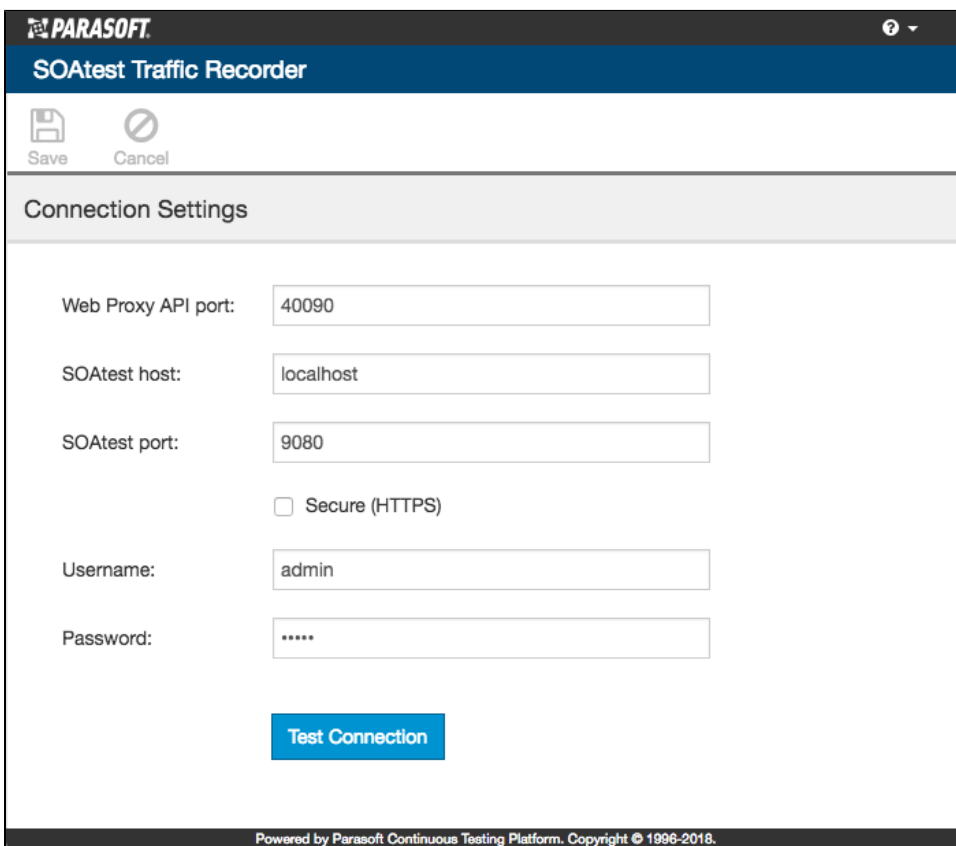
```
%INSTALLDIR%/jre/bin/java -jar com.parasoft.traffic.proxy.jar --version
```

Parasoft Recorder

Jar

[Parasoft Recorder](#)

1. Parasoft [] chrome://extensions []
2. API ([Parasoft Recorder](#)) SOAtest



The screenshot shows the 'SOAtest Traffic Recorder' configuration window. At the top, there is a 'PARASOFT' logo and a help icon. Below the title bar, there are 'Save' and 'Cancel' buttons. The main section is titled 'Connection Settings' and contains several input fields: 'Web Proxy API port' (40090), 'SOAtest host' (localhost), 'SOAtest port' (9080), a checkbox for 'Secure (HTTPS)' which is unchecked, 'Username' (admin), and 'Password' (masked with dots). A blue 'Test Connection' button is located at the bottom of the form. The footer of the window reads 'Powered by Parasoft Continuous Testing Platform. Copyright © 1986-2018.'

3. [] []
HTTPS SOAtest [(HTTPS)]