

# Importing an Existing Green Hills Software .gpj Project

You can import existing Green Hills Software .gpj projects from the GUI or from the command line.

Note that we support the GPJ format introduced in the MULTI-4.0 environment. Direct importing of BLD format project files is not supported, but you can use the `bltgpj.exe` tool to validate and convert projects in the BLD format. See [Validating and Converting GHS MULTI 2000 C/C++ Compiler v3.5 .blt Projects](#).

The key supported MULTI Builder features are:

- Recognizing types and hierarchies of project files.
- Accumulation of compilation and linking options.
- Searching files on paths specified with Source Directories Relative to This File (`:sourceDir`) and Source Directories Relative to Top-Level Project (`:sourceDirNonRelative`) build-only properties.
- Importing of environment variables.

The GPJ-related features in C++test allow:

- Scanning project structures for testable projects, sources, and build options.
- Creation of test projects from your original GPJ testable projects, either manually or using the specialized project importer.



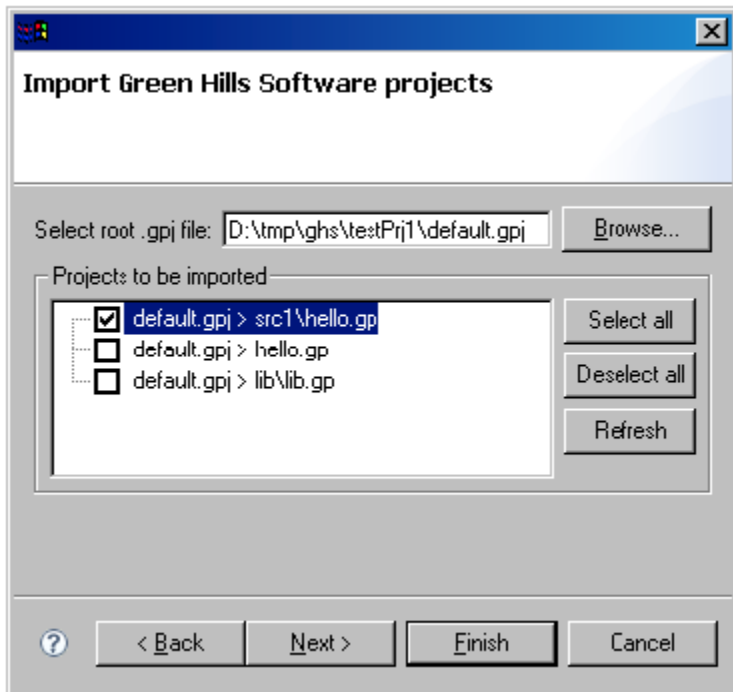
## Note - Manually Creating a Project

If you want more control over a project's contents and settings than the Green Hills Software project import wizard provides, you can manually create a project (as described in [Creating a Project from the GUI](#)) and set it to use the options from a GPJ project (as described in [Use options from Green Hills Software \(GHS\) project](#)).

## Importing a Project with the GUI Wizard

To create a C++test project from a .gpj project:

1. Choose **File> New> Project**.
2. Choose **C++test> Import Green Hills Software projects**.
3. Click **Next**. The Import Green Hills Software projects wizard will open.
4. Complete the first page of the wizard as follows, then click **Next**.
  - In the **Select root .gpj file** field, enter or browse to the root GPJ project file path.
  - In the **Projects to be imported** tree, select the testable projects to import.



5. Complete the second page of the wizard as follows, then click **Finish**.
  - In **Imported Projects Destination**, specify whether you want the C++test project to be created: in the workspace, the original testable GPJ project location, or some external location.

- If you choose **external location**, specify the external path (or browse to it) and specify whether you want to create a subdirectory for each project.
- In **Project contents settings**, specify if you want to use linked folders (recommended).
  - If you choose to use linked folders, specify if you want to use Path Variable to define linked folder locations and—if so—provide the appropriate variable information.
- In **Compiler settings**, choose the compiler family and/or specify the executables.

Check if any error/warning messages are displayed on the wizard's title area. If there are messages, you may not be able to navigate the pages and/or to finish the wizard.

## Importing a Project from the Command Line

To create a C++test project from a .gpj project, do one of the following:

- Use the `-gpj <prj_root_file>` switch to `cpptestcli`.
- First, create a plain text options file with the desired `gpj.import.*` options (see [Local Settings \(Options\) Files](#) for details). Then, in your `cpptes tcli` invocation, use `-gpj <prj_root_file>` and `-localsettings <options.file>`.

If an existing project in the workspace has the same name as the imported project, the new project will not be imported.

## Validating and Converting GHS MULTI 2000 C/C++ Compiler v3.5.bld Projects

Direct importing of BLD format project files is not supported. Users can instead use the `bldtogpj.exe` tool to validate and convert BLD format to the recognized GPJ format. The `bldtogpj.exe` tool will utilize the `gblconvert.exe` shipped with the GHS v4.0 C/C++ compiler for PowerPC distribution to create a new GPJ format project file.

### Usage

```
bldtogpj.exe <path_to_gblconvert> <path_to_top_level_bld_file> <optional:name_of_ext>
<path_to_gblconvert> : absolute path to gblconvert in GHS 4.0/4.2
<path_to_top_level_bld_file> : absolute path to the main bld project file
<optional:name_of_ext> : extension of the generated gpj file (must end in .gpj, default is .parasoft.gpj)
```

### Example

```
bldtogpj.exe "C:\GHS\PPC405b\gblconvert.exe" "C:\Project\default.bld" ".ext.gpj"
```

After the validation and conversion, a new GPJ file with the specified extension (or by default `.parasoft.gpj` extension) will be created. You can utilize this newly created GPJ format project file for importing into C++test. See [Importing an Existing Green Hills Software .gpj Project](#).