

# HTTP 1.0

HTTP 1.0

:

- [HTTP 1.0](#)
- [OAuth](#)

## HTTP 1.0

HTTP 1.0 (NTLM Digest HTTP) GUI 1 [] SOAP HTTP

[] [] [HTTP 1.0] []

- 
- [URL](#) Messaging Client )
- 
- [HTTP](#)
- [Cookie](#)

[]

- : URL SOAP Client WSDL [**WSDL**] WSDL 3
- **SOAP Action:** [ **WSDL** ] SOAP Client
- : [ **WSDL** ]  
( )  
\${var\_name} [Virtualize Virtualize](#)  
[Extensibility and Scripting Basics](#)
- :: HTTP ( "HTTP/1.0 202 Accepted")
- :
  - : "Connection: Keep-Alive" NTLM Digest HTTP
  - (): HTTP HTTP 1.0 HTTP 1.0
- (**RESTSOAPMessagingEDI Client** ): HTTP //
- (**RESTSOAPMessagingEDI Client** ):
  - **Gzip** : gzip MTOM SOAP Client
  - **gzip** : "Content-Encoding: gzip"

## URL

[URL]

- **URL** : GET URL [] /



### Message Client URL

URL "application/x-www-form-urlencoded" '+' 2 16 '=' '&'

[URL] URL http://host:8080/path?a=1&b=2&c=3

[] > [SSL]

- :

[] > [HTTP]

- : basicNTLMDigest Kerberos [] [] **BasicNTLMKerberos Digest**
  - **Basic NTLM Digest**
  - Kerberos []
- : HTTP []

[ ] > [OAuth ]

- : OAuth OAuth Authentication HTTP
- :
- **OAuth :** OAuth
  - :
  - :
  - :
- : ( )
- : ( )
- :
- **OAuth :**
- **OAuth :** OAuth nonce

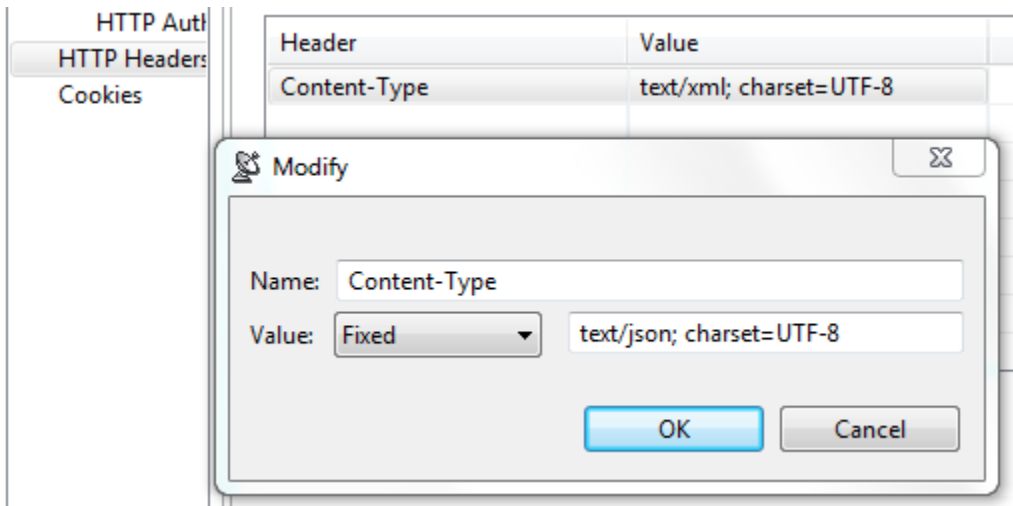
OAuth [Using OAuth Authentication](#)

## HTTP

[HTTP ]

- : HTTP
- : HTTP ( )
- : HTTP

Content-Type



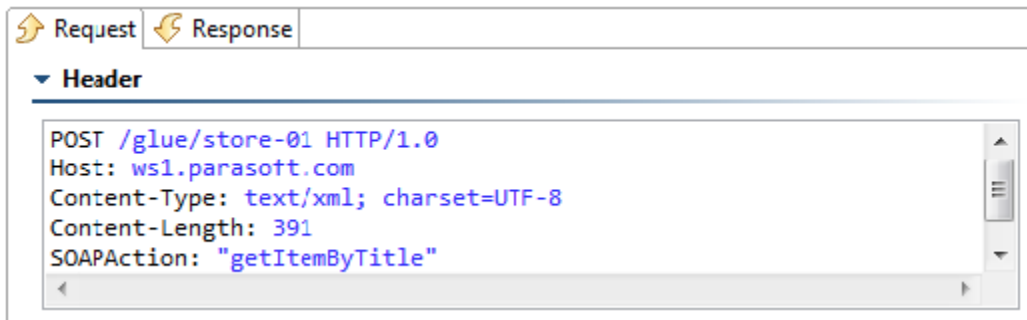
GUI

HTTP URL

## Content-Type

HTTP POSTPUT DELETE GETOPTIONSHEAD TRACE

SOAP content-type SOAP (SOAP 1.1 "text/xml" SOAP 1.2 "application/soap+xml") XML "text/xml" JSON "application/json" "application/x-www-form-urlencoded" MIME "multipart" content-type "start" "boundary" EDI Fixed Length CSV

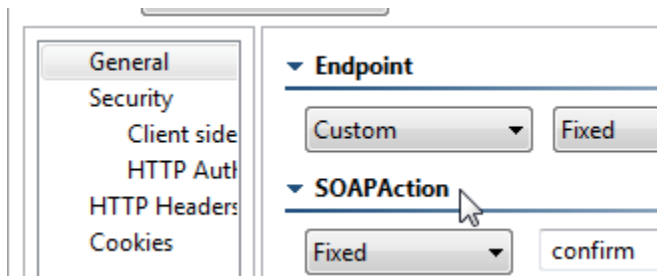


## Content-Length

HTTP

## SOAPAction

HTTP SOAP 1.1 [] SOAPAction



## Authorization

[[] > [HTTP OAuth] ) HTTP OAuth NTLM Digest Kerberos

## Connection

[Keep-Alive] Keep-Alive [] () NTLM Digest HTTP Keep-Alive

## Proxy-Authorization

## Cookie

[Cookie]

- : HTTP

## OAuth

Parasoft Web (2) HTTP 1.0/HTTP 1.1 OAuth

Rest Client [HTTP] Messaging Client []

## OAuth

OAuth (Open Authorization) OAuth

OAuth () 3 OAuth

() () OAuth

3

- 1.
2. OAuth URL
- 3.

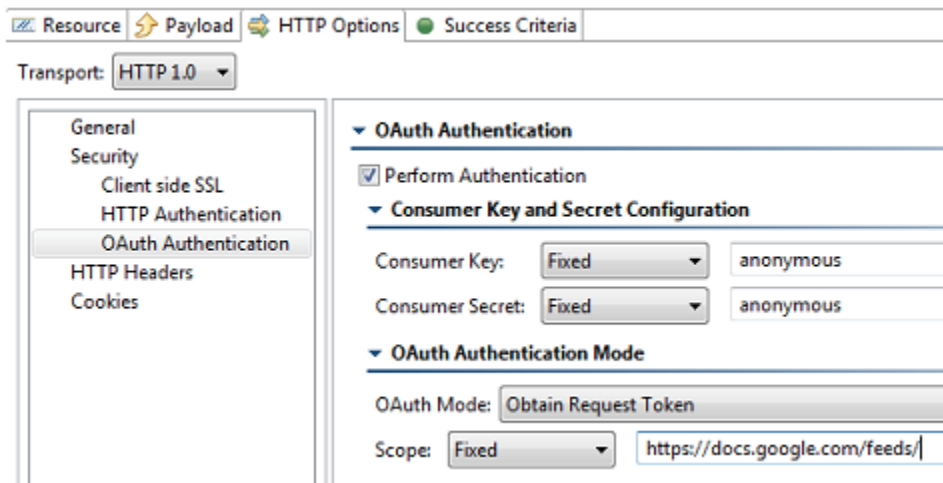
## OAuth 1.0a

OAuth 1.0 3

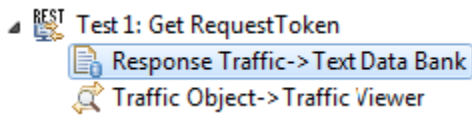
- 1.
- 2.
3. AAuth

REST Client Messaging Client OAuth 1.0a

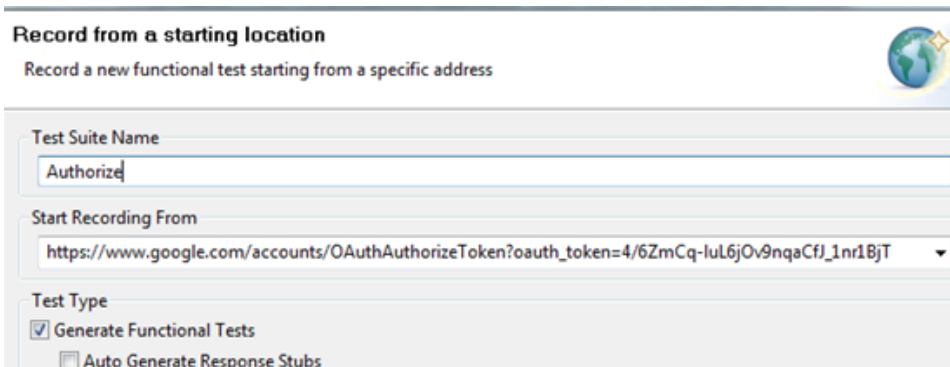
1. REST Client
2. [HTTP] [HTTP 1.0] [HTTP 1.1] [] OAuth OAuth
3. [] []
4. [OAuth] []
5. () []
6. () [OAuth] OAuth



7. REST Client Text Data Bank (oauth\_token)



8. Web [] URL ()URL oauth\_token



9. (/)
- 10.
11. (HTML) Browser Data Bank
12. Browser Playback Text Data Bank (7) \${varName}

**Name**

Name: Navigate to "\${WWW\_GOOGLE\_COM\_BASE\_URL}/accounts/"  Use Default Name

**Tool Settings**

Pre-Action Browser Contents  User Action  Wait Conditions  Pre-Action HTML

Action: **Navigate**

URL: **Fixed** \${WWW\_GOOGLE\_COM\_BASE\_URL}/accounts/OAuthAuthorizeToken?oauth\_token=\${GOOGLE\_REQUEST\_TOKEN}

Window: **Custom**

1. REST Client
2. [HTTP] [HTTP 1.0] [HTTP 1.1] [ ] OAuth OAuth
3. [ ] [ ]
4. [OAuth] [ ]
5. [ ] [ ] Text Data Bank
6. [ ] Browser Data Bank
7. REST Client Text Data Bank ( oauth\_token)

**OAuth**

1. REST Client
2. [HTTP] [HTTP 1.0] [HTTP 1.1] [ ] OAuth OAuth
3. [ ] [ ]
4. [OAuth] [OAuth]
5. [ ] [ ] Text Data Bank
- 6.

**OAuth 2.0**

OAuth 2.0 OAuth 1.0a OAuth 2.0 OAuth 1.0a

OAuth 2.0 <http://tools.ietf.org/html/draft-ietf-oauth-v2-20>

OAuth 2.0 3

- 1.
- 2.
- 3.

REST Client Messaging Client OAuth 2.0

1. Web [ ] URL OAuth URL URL
- 2.
3. -> Validate Header Text Data Bank HTTP URL

**Choose Browser Data to Send to Output**

The Browser Testing Tool generates two types of data for use with output tools.

Use the following as input:

- Browser contents (rendered HTML)
- HTTP traffic

## Choose Request

Choose a browser request to validate or stub.

1. [https://foursquare.com/oauth2/authenticate?client\\_id=INQZINRVNXIYILNGBCW...](https://foursquare.com/oauth2/authenticate?client_id=INQZINRVNXIYILNGBCW...)
2. <http://www.iana.org/domains/example/?code=AY1HKTU5KC2CW4WMAKIL2T3...>
3. [http://www.iana.org/\\_css/reset-fonts-grids.css](http://www.iana.org/_css/reset-fonts-grids.css)
4. [http://www.iana.org/\\_css/screen.css](http://www.iana.org/_css/screen.css)
5. [http://www.iana.org/\\_js/common.js](http://www.iana.org/_js/common.js)
6. [http://www.iana.org/\\_css/print.css](http://www.iana.org/_css/print.css)
7. [http://www.iana.org/\\_js/corners.js](http://www.iana.org/_js/corners.js)
8. [http://www.iana.org/\\_js/prototype.js](http://www.iana.org/_js/prototype.js)

- Test 1: Navigate to "\${FOURSQUARE\_COM\_BASE\_URL}/oauth2/authenticate?cl
- HTTP Traffic->Traffic Viewer
- Browser Contents->Browser Contents Viewer
- Validate Request Header for <http://www.iana.org/domains/example/?code>

1. REST Client URL URL code Text Data Bank

The screenshot shows the REST Client interface with the following configuration:

- Resource: Payload
- Input Mode: Form
- Protocol: Fixed, https selected
- Host: Fixed, foursquare.com
- Port: Fixed
- Parameters (Table View):

Parameters	Value
client_id	INQZINRVNXIYILNGBCWUBUBAMNZCQ6DWXOZ...
client_secret	YKU12QENAPOW3H42EQWQXPFE3CPCRXAYVN4K...
grant_type	authorization_code
redirect_uri	http://www.iana.org/domains/example/
code	{FOURSQUARE_CODE}

2. (TextJSON ) REST Client

1. REST API REST Client URL URL oauth\_token

Resource Payload HTTP Options Success Criteria

Input Mode: Form

Protocol: Fixed  http  https

Host: Fixed api.foursquare.com

Port: Fixed

Parameters

Path Query

View: Table

Parameters	Value
oauth_token	{FOURSQUARE_ACCESS_TOKEN}