

Enabling and Disabling Proxies

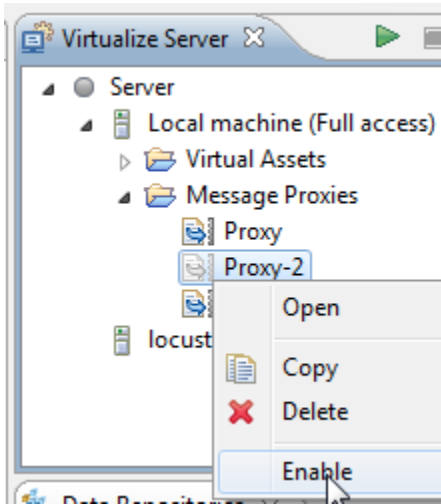
This topic explains how to enable and disable proxies from the Virtualize UI.

Enabling a Proxy

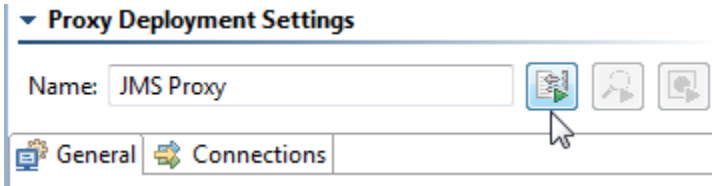
When a proxy is enabled, it will forward traffic in the configured manner. You can also record from it as well as monitor its events.

There are two ways to enable a proxy:

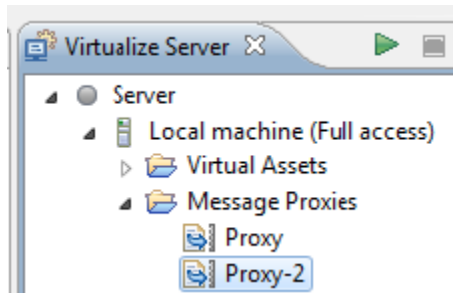
- In the Virtualize Server tree, right-click the appropriate proxy, then choose **Enable**.



- In the proxy's configuration panel, click **Enable Proxy**.



Once enabled, the proxy's icon will change from gray to color.



Disabling a Proxy

There are two ways to disable a proxy:

- In the Virtualize Server tree, right-click the appropriate proxy, then choose **Disable**.
- In the proxy's configuration panel, click **Disable Proxy**.