

# Modifying User Actions Simulated by a Web Scenario

This topic explains how to modify the user actions simulated by a web scenario.

Sections include:

- [Configuring Actions](#)
- [Common Configuration Controls](#)

## Configuring Actions

To view and modify the action taken by a specific scenario step:

1. Double-click the scenario step whose actions you want to configure.
2. In the configuration panel that opens in the right side of the GUI, open the **User Action** tab.
3. Review the existing actions (initially, the ones captured during recording) and modify the settings as needed to specify the actions you want performed. You can choose from the available pre-set actions, or define a custom one.

## Using Data Sources to Parameterize User Actions

You can use data sources to parameterize user actions—for instance, to have a type action iterate through a set of different values stored in an Excel spreadsheet.

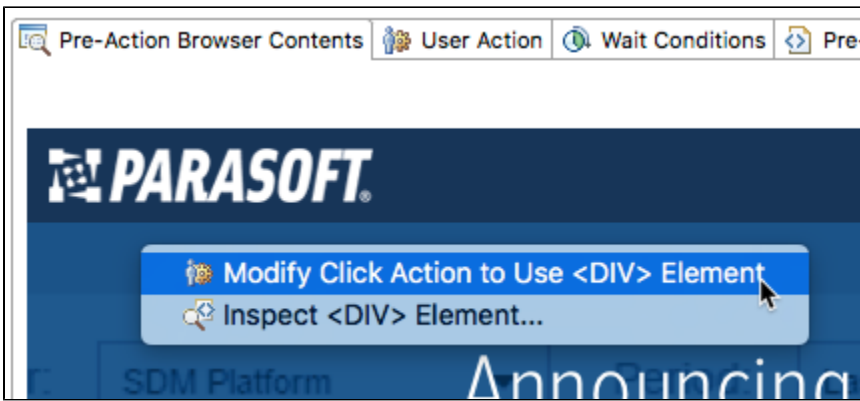
The screenshot shows the configuration panel for a User Action. The **Name** section has a text input field containing "Type 'internet'" and a checked **Use Default Name** checkbox. The **Data Source** section, highlighted with a red box, contains a dropdown menu set to "ds". The **Tool Settings** section has tabs for "Pre-Action Browser Contents", "User Action", "Wait Conditions", and "Pre-Action HTML". The **Action** dropdown is set to "Type". The **Text Input** section, also highlighted with a red box, has a **Value** dropdown set to "Parameterized" and a dropdown set to "searchTerm". The **Element Locator** section has a **Use Element Properties** dropdown, **Element Name** set to "input", **Attribute Name** set to "name", **Attribute Value** set to "Fixed" with a text input "searchwords", **Index** set to "Fixed" with a text input "0", and **Window** set to "Window 1: (anonymous)".

## Identifying Elements Associated with User Actions

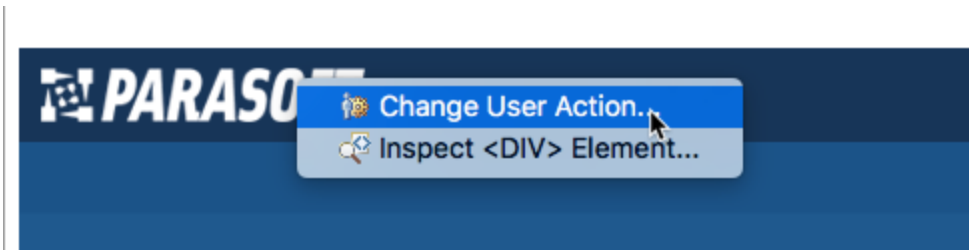
The element that is the source of a user action will be highlighted with a solid blue border in the scenario step's Pre-Action Browser Contents tab.

## Changing the Target of a User Action

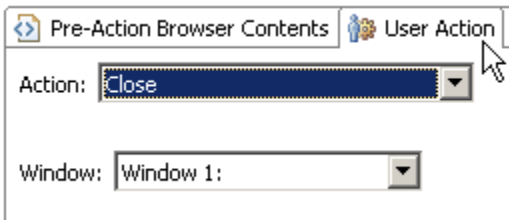
To quickly change the target of a user action, right-click the related element in the **Pre-Action Browser Contents** tab, then choose the appropriate **Modify** command.



If the user action that you want to change is not associated with a specific element (for instance, a "close" or "navigate" action), you can right-click anywhere in the **Pre-Action Browser Contents** tab, then choose **Change User Action**.



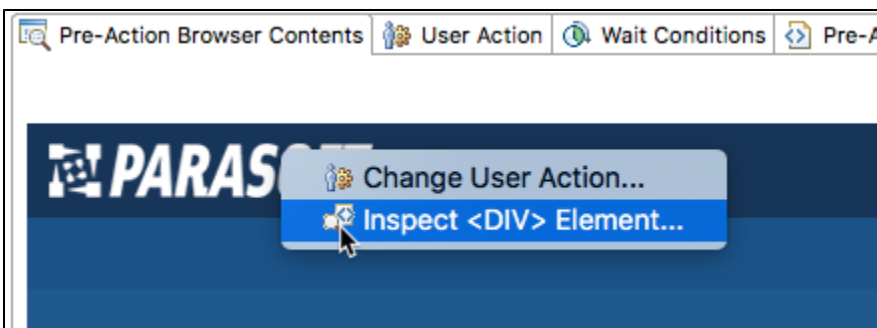
This opens the **User Action** tab, which allows you to modify the target.



## Inspecting the HTML for Elements

As you create and modify user actions for page elements, you may want to inspect the HTML to determine if you are adding actions to the appropriate elements.

To see the HTML for a given element by right-click that element, then choose **Inspect <Element>** from the shortcut menu.



# Common Configuration Controls

The configuration section for many preset user actions contains an "Element Locator" section. This section allows you to specify the element associated with the action via element properties, XPath, or script.

Action: Click

▼ Element Locator

Use Element Properties ▼  
Use Element Properties  
Use XPath  
Use Script

Attribute value: Fixed click

Index: Fixed 0

**Use XPath** allows you to enter an XPath to be used as an identifier.

**Use Script** allows you to enter a script that defines the desired user action.

**Use Element Properties** allows you to specify properties via the following controls:

- **Element:** Specifies the element name (for example, "img", "div", or "a") that the action should apply to. To allow any element, enter "Any" into this field.
- **Attribute Name:** Specifies the attribute name to identify the element (for example, "title", "id", or "name"). You can configure this value using one of the following mechanisms.
- **Attribute Value:** Specifies the expected value for the attribute supplied by the Attribute Name field.
  - If you want to specify a fixed value, select the **Fixed** option, then specify the desired value in the text box.
  - If you want to use values defined in a data source, select the **Parameterized** option, then specify the data source column that contains the values you want to use. Note that this option is only available if the project contains at least one data source.
  - If you want to use the return value of a custom method, select the **Script** option. Click the **Edit** button to create or edit the method(s) and choose the desired method for use from the **Method** drop-down menu in the popup dialog. If there are two or more methods, you can also select a different method for use from the drop-down menu in the form panel.
- **Index:** Specifies the element that matches the previous criteria. Entering "0" means that the first element that matches the "Element," "Attribute Name," and "Attribute Value" criteria will be used. Entering "1" means that the second element that matches will be used, and so on.
  - If you want to specify a fixed value, select the **Fixed** option, then specify the desired value in the text box.
  - If you want to use values defined in a data source, select the **Parameterized** option, then specify the data source column that contains the values you want to use. Note that this option is only available if the project contains at least one data source.
  - If you want to use the return value of a custom method, select the **Script** option. Click the **Edit** button to create or edit the method(s) and choose the desired method for use from the **Method** drop-down menu in the popup dialog. If there are two or more methods, you can also select a different method for use from the drop-down menu in the form panel.

Also, note that many actions allow you to configure **Window Name**. This allows you to specify the name of the window you would like the action to occur in. Leaving this field blank indicates that the default window will be used.