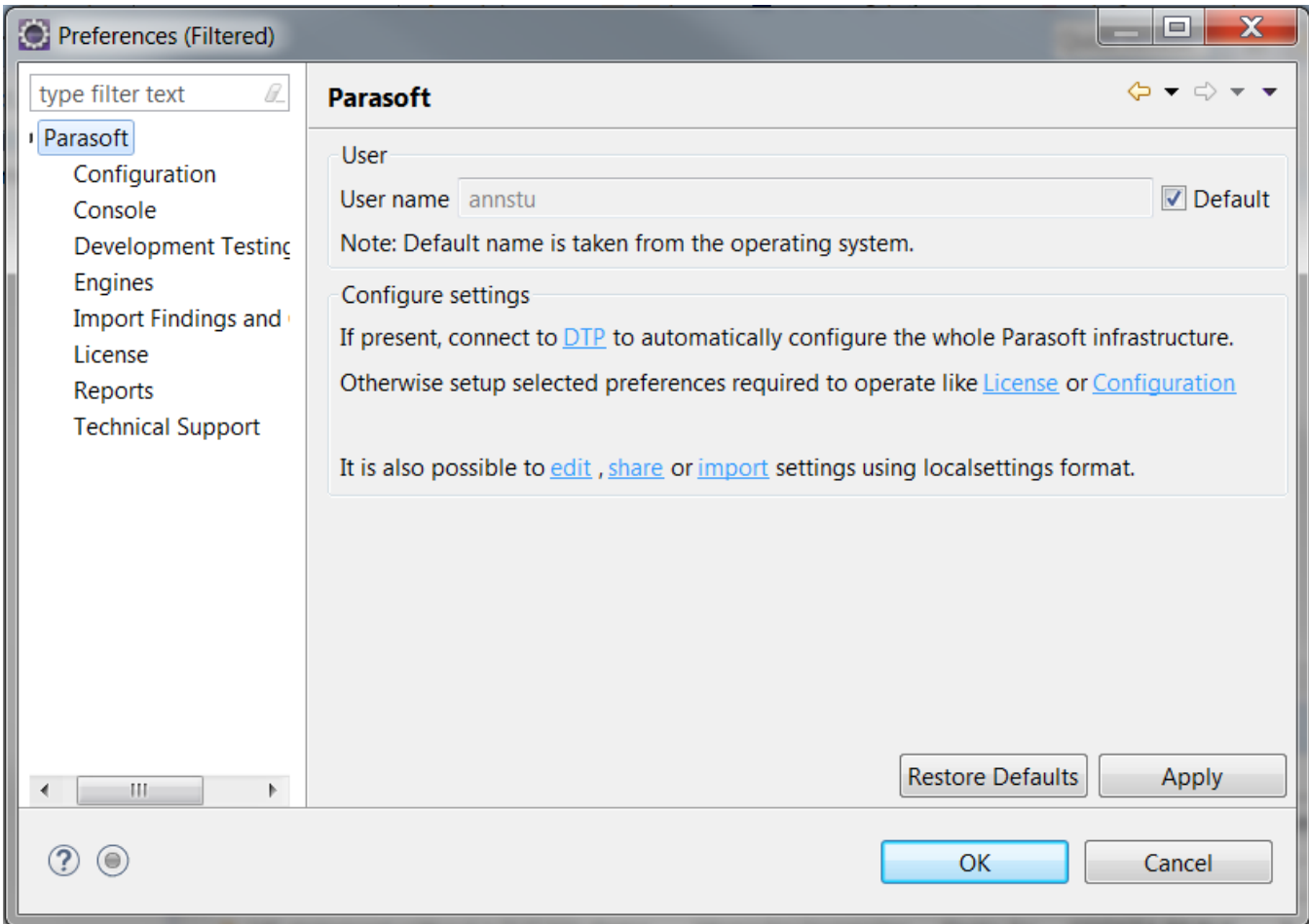


You can access general Parasoft settings from your IDE. Click **Parasoft** in the menu bar and choose **Options** (Visual Studio) or **Preferences** (Eclipse).



From here, you can perform the following actions:

- Set the user name associated with your code, analysis, and other development artifacts that are sent to DTP server by disabling the **Default** option in the User section and entering a new user name.
- Click the **DTP** link to open the DTP connection settings panel; see [Connecting to DTP](#).
- Click the **License** link to open the license configuration settings panel; see [Setting the Parasoft License](#).
- Click the **Configuration** link to open the test configuration settings panel, see [Working with Test Configurations](#).
- Click the **edit** link to configure additional settings properties; see the [Customizing Advanced Settings](#).
- Click the **share** link to export your settings to a .properties configuration file that can be shared with other users; see [Exporting and Importing Settings](#).
- Click the **import** link to import settings from a .properties configuration, see [Exporting and Importing Settings](#).