

# SOAP Client

The SOAP Client tool sends messages to SOAP servers. This tool is available in SOAtest and Virtualize.

It can be used to test a Web service, test the communication between the client and server, and check the content of the SOAP messages. You can use the SOAP Client tool to test services with or without a WSDL. This tool is the foundation of most SOA functional test cases.\

If you have access to a WSDL, you might want to use the New Test Suite Wizard to automatically generate SOAP Client tests for the service you want to test. For information on this functionality, see [Automatic Creation of Test Suites - Overview](#).

In addition, you can configure SOAtest to report or manipulate the results of any SOAP Client test by adding an appropriate “output” tool. For information on this functionality, see [Adding Test Outputs](#).

To send a message using the SOAP Client tool, you need to tell SOAtest or Virtualize what message to send and how to send it. This is done by specifying the parameters in the tool's configuration panel.

Information on how to configure the different options of the SOAP Client tool can be found in the following subsections:

- [WSDL Options](#)
- [Request Options](#)
- [Transport Options](#)
- [Attachment Options](#)
- [WS-Policy Options](#)
- [Misc Options](#)
- [Related Tutorials](#)

## WSDL Options

Specifying options in the **WSDL** tab allows you to populate the **Request** tab with items that make it easier for you to specify the request message. You can specify the following WSDL settings:

The **WSDL** tab allows you to specify the following WSDL settings:

- **Resource Mode:** Specifies WSDL URI or Schema URL mode.
- **WSDL URI:** Describes the WSDL URI where this Web service can be accessed. You can either enter a value or click the **Browse** button. If you do not have a WSDL, you can leave this field empty.
- **Schema URL:** Describes the Schema URL where this Web service can be accessed. You can either enter a value or click the **Browse** button. If you do not have a schema, you can leave this field empty.
- **Constrain to WSDL:** (Constrain to Schema if Schema resource mode is selected) Determines whether certain parameters of the messaging tool obtain their values from the WSDL (or Schema) rather than from manual entry. If this option is enabled, certain parameters (e.g. router endpoint, SOAP action, SOAP body and header parameters) are disabled and get their values from the WSDL. If this option is disabled, the **Refresh WSDL (Refresh Schema)** button will also be disabled.
- **WSDL Documentation:** (Automatically completed if available): Describes the Web service at the given WSDL URI.

## Request Options

The **Request** tab allows you to configure the request that you want the tool to send.

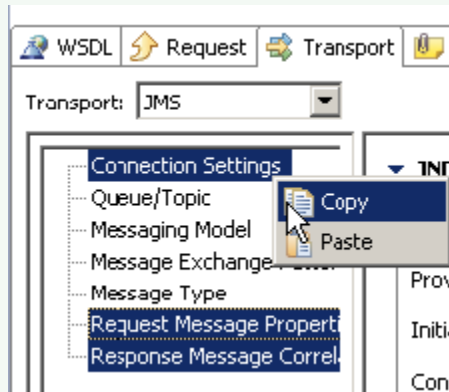
From the **Request** tab of the SOAP Client tool, you can select input modes from the **Views** drop-down list. The SOAP Client tool shares these options with the Messaging Client tool and Message Stub tool. For more information on these shared options, see [Views/Input Modes Overview](#).

## Transport Options

The Transport options allow you to determine whether the client sends requests using **HTTP 1.0**, **HTTP 1.1**, **JMS**, **SonicMQ**, **WebSphere MQ**, **RMI**, **SMTP**, **TIBCO**, **.NET WCF HTTP**, or **.NET WCF TCP** protocols. To configure the properties of each protocol, select the appropriate protocol from the **Transport** drop-down list within the Transport tab of the SOAP Client tool.

## Tip - Copying and Pasting Transport Settings Across Tools

You can copy transport settings from one tool to another. Just select the left-pane setting categories that you want to copy, then use right-click copy and paste commands.



For more information, see the following sections:

- [HTTP 1.0](#)
- [HTTP 1.1](#)
- [JMS](#)
- [IBM WebSphere MQ](#)
- [RMI](#)
- [SMTP](#)
- [TIBCO Rendezvous](#)
- [.NET WCF TCP](#)

## Attachment Options

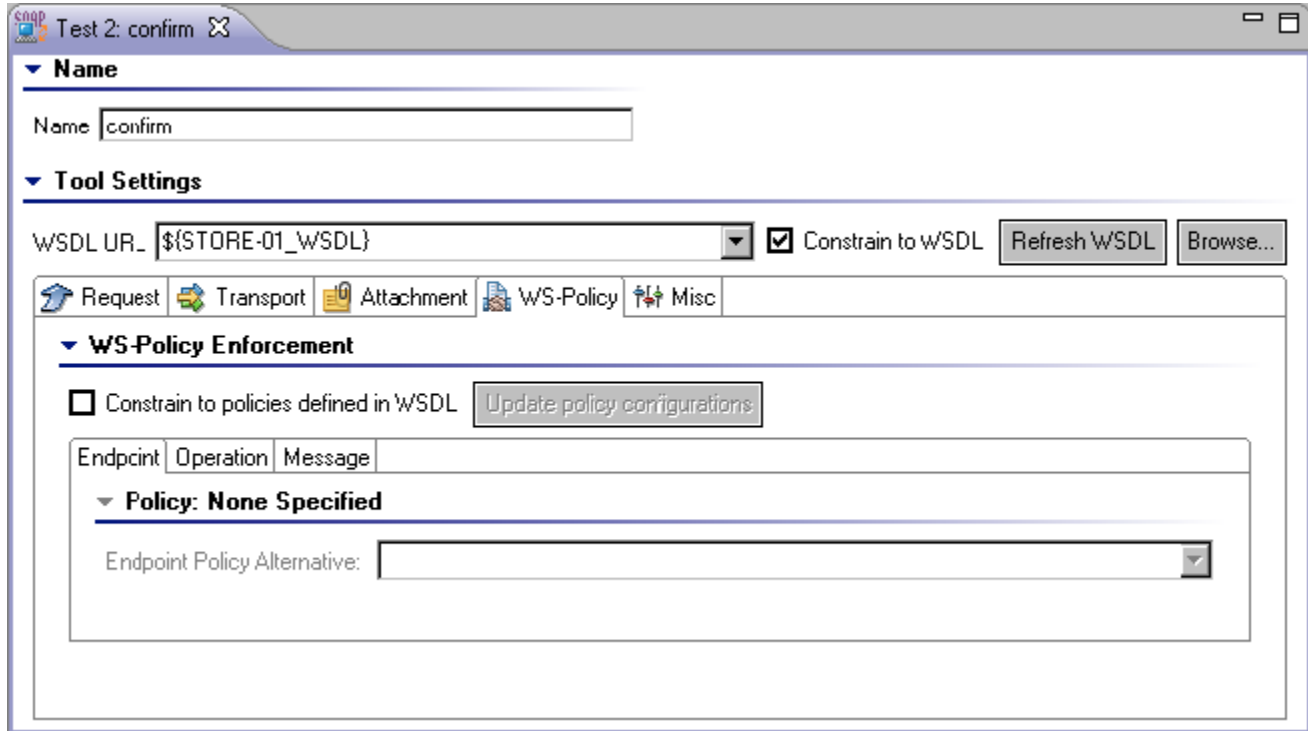
The **Attachment** tab allows you to send either Binary or XML attachments without scripting. To send an attachment, perform the following from the **Attachment** tab:

1. Click the **Add** button. An **XML Attachment** entry displays in the Attachment table.
2. Double-click the **XML Attachment** entry. An Edit Attachments dialog displays.
3. In the Edit Attachments dialog, select either **XML** or **Binary** from the Mode drop-down menu.
4. Configure the attachment:
  - The following option is available for **XML** Mode:
    - **Views:** Select the desired view from the drop-down menu and configure accordingly. Options are **Literal XML**, **Form XML**, **Scripted XML**, and **Form Input**.
  - The following options are available for **Binary** Mode:
    - **Base 64 Encoding:** Enables Base 64 Encoding to encode the binary value.
    - **Data Source Column:** Select to send values from a data source column.
    - **File:** Select to send values from a file. Choose the desired file by clicking the **Browse** button. Check the **Persist as Relative Path** option if you want the path to this file to be saved as a path that is relative to the current configuration file.
    - **Text:** Select to send a text value.
    - **Content type:** Specify the content type. Click the **Edit Headers** button if you want to add, modify, or delete attachment headers.

## WS-Policy Options

The WS-Policy tab is used to keep track of which policy the tool is using. It also allows you to switch between policies and update the attached tools based on that policy.

The following options are available in the **WS-Policy** tab of the SOAP Client tool:



- **Constrain to policies defined in WSDL:** If this option is selected, you will be able to update policy configurations.
- **Update policy configuration:** Clicking this button will remove the current policy configuration and add the newly chosen policy configuration.
  - Policies in a WSDL can be attached to the **Endpoint**, **Operation**, or **Message** subjects. The result is the union of all the alternatives chosen for each subject.

## Misc Options

The following options are available in the **Misc** tab of the SOAP Client tool:

- **Notes:** (optional) Records additional tool information that you enter in this field.
- **Timeout after (seconds):** Specifies the length of delay (in seconds) after which your FTP, telnet, or HTTP requests should be timed out. The **Default** setting corresponds to the timeout set in the Preferences panel. The **Custom** setting allows you to enter a timeout. A non-positive timeout value can be entered to specify an infinite timeout.
  - **Fail the test on Timeout:** Select this option to fail the tool on the specified timeout.
  - **Pass the test only if a Timeout occurred:** Select this option to pass the tool if the specified timeout occurred (i.e. tool did not finish execution within the specified time).
- **Attachment Encapsulation Format:** Specifies whether to use the **Default** or **Custom** encapsulation format. The **Default** option specifies whatever is chosen as the Attachment Encapsulation Format in the Misc tab of the system preferences (for more information, see [SOAP Settings](#)). The **Custom** option allows you to choose **MIME**, **DIME**, **MTOMAlways**, or **MTOM Optional**. For more details, see [Working with Attachments](#).
- **SOAP Version:** Select **Custom** from the drop-down menu and select either **SOAP 1.1** or **SOAP 1.2**. The default value is **SOAP 1.1**.
- **Outgoing Message Encoding:** Allows you to choose the encoding for outgoing messages. You can choose any **Character Encoding** you wish from the Preferences panel to read and write files, but the **Outgoing Message Encoding** provides additional flexibility so you can set a different charset encoding for the SOAP request from the global setting.
- **Style/Use:** (Options are disabled if the **Constrain request to WSDL** check box is selected in the WSDL tab) These options allow you to select the body style and encoding of the SOAP message:
  - **Body Style:** Select either **document** or **rpc**.
  - **Use:** Select either **encoded** or **literal**.
  - **Encoding Style URI:** (Automatically completed if available) Lists the encoding style URI used to send requests.
  - **Target Object URI:** Specifies the target object URI.

## Related Tutorials

The following tutorial lessons demonstrate how to use this tool:

- [Service Functional Testing](#)
- [Advanced Strategies](#)
- [Extending SOAtest with Scripting](#)

- [WS-Security](#)
- [Running Tests in Different Environments](#)