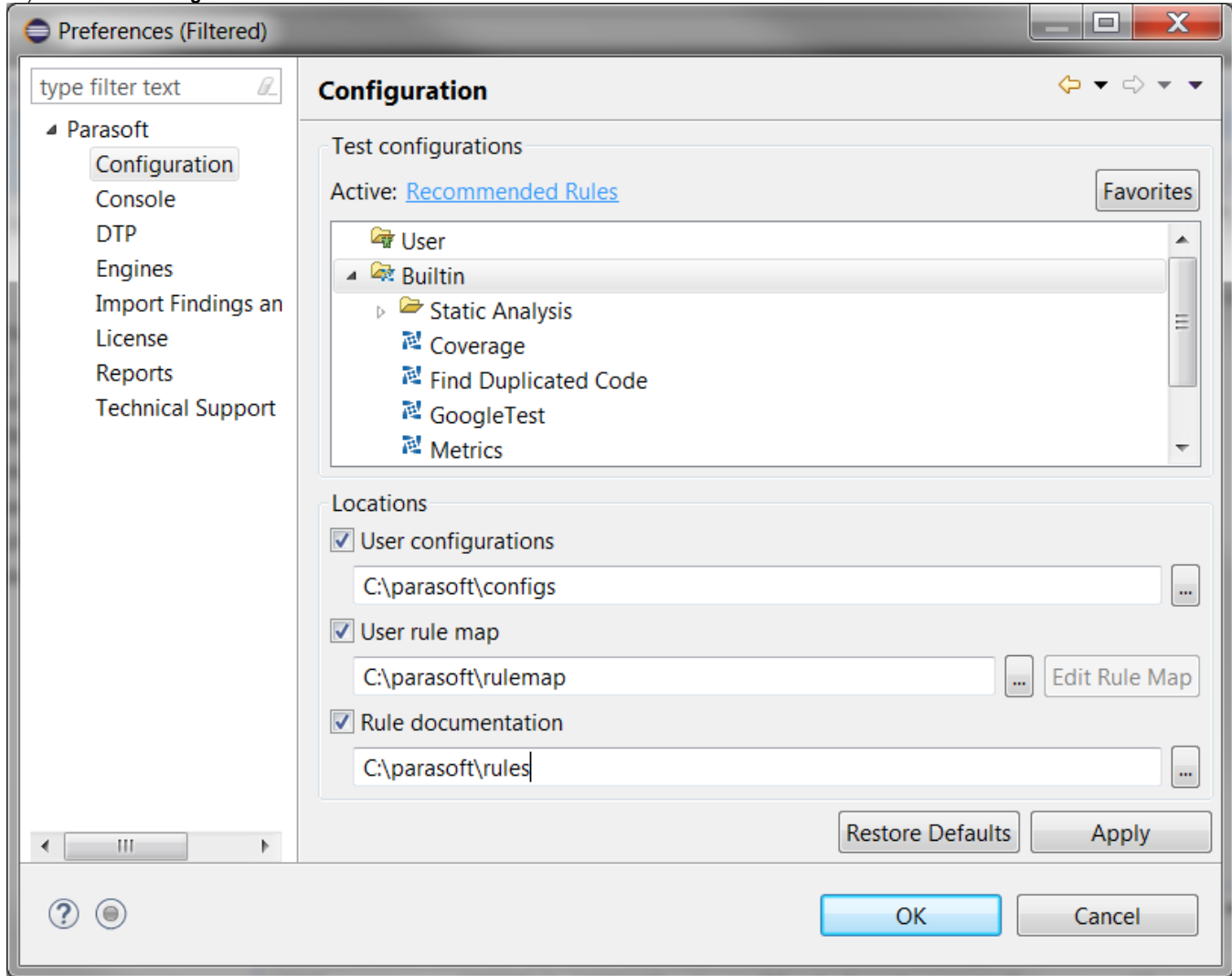


# About the Configuration Preference Page

The Configuration preference page is an interface for creating, activating, and managing test configurations locally. It allows you to:

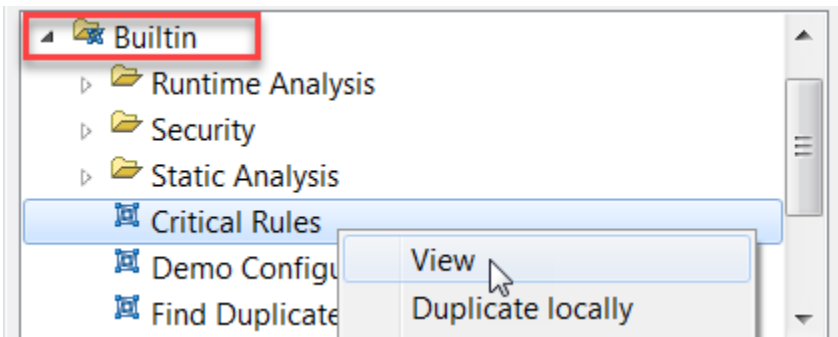
- Review and run built-in and user-defined test configurations, as well as configurations served from DTP.
- Create, edit, delete, and activate new test configurations.
- Manage test configurations stored in the Favorites menu.
- Set up a custom location for user-defined test configurations (use absolute paths).
- Set up a custom location for rule documentation (use absolute paths).
- Set up a location for storing custom rule documentation and rule mapping.

To access the test configuration preference page, click **Parasoft** in the menu bar and choose **Preferences** (Eclipse), **Options** (NetBeans) or **Settings** (IntelliJ). Then select **Configuration**.

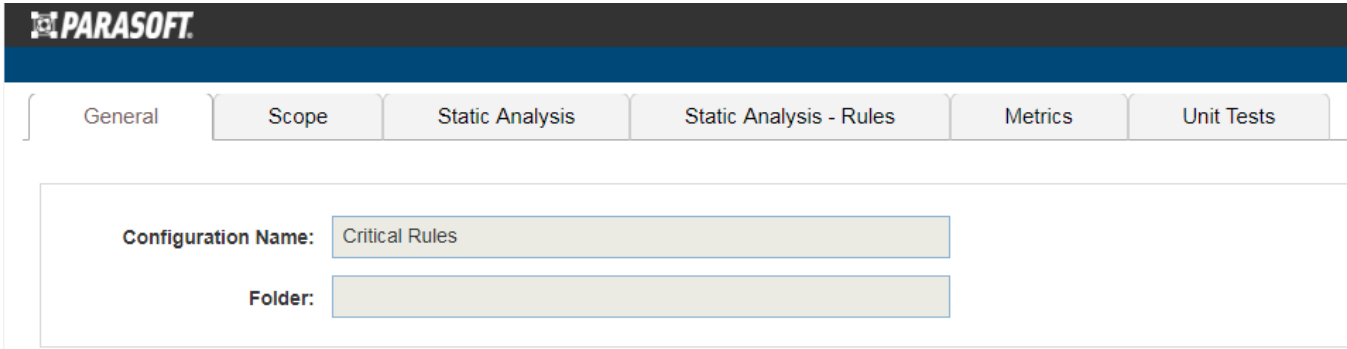


## Viewing Test Configuration Details

The Configurations page allows you to view details of the built-in test configurations. Right-click a test configuration and choose **View**:



A web interface will display the information how the test configuration is configured. Click the tabs to view more details.



**i** The built-in test configurations are not editable, but you can create and customize a new test configuration; see [Creating Custom Test Configurations](#).