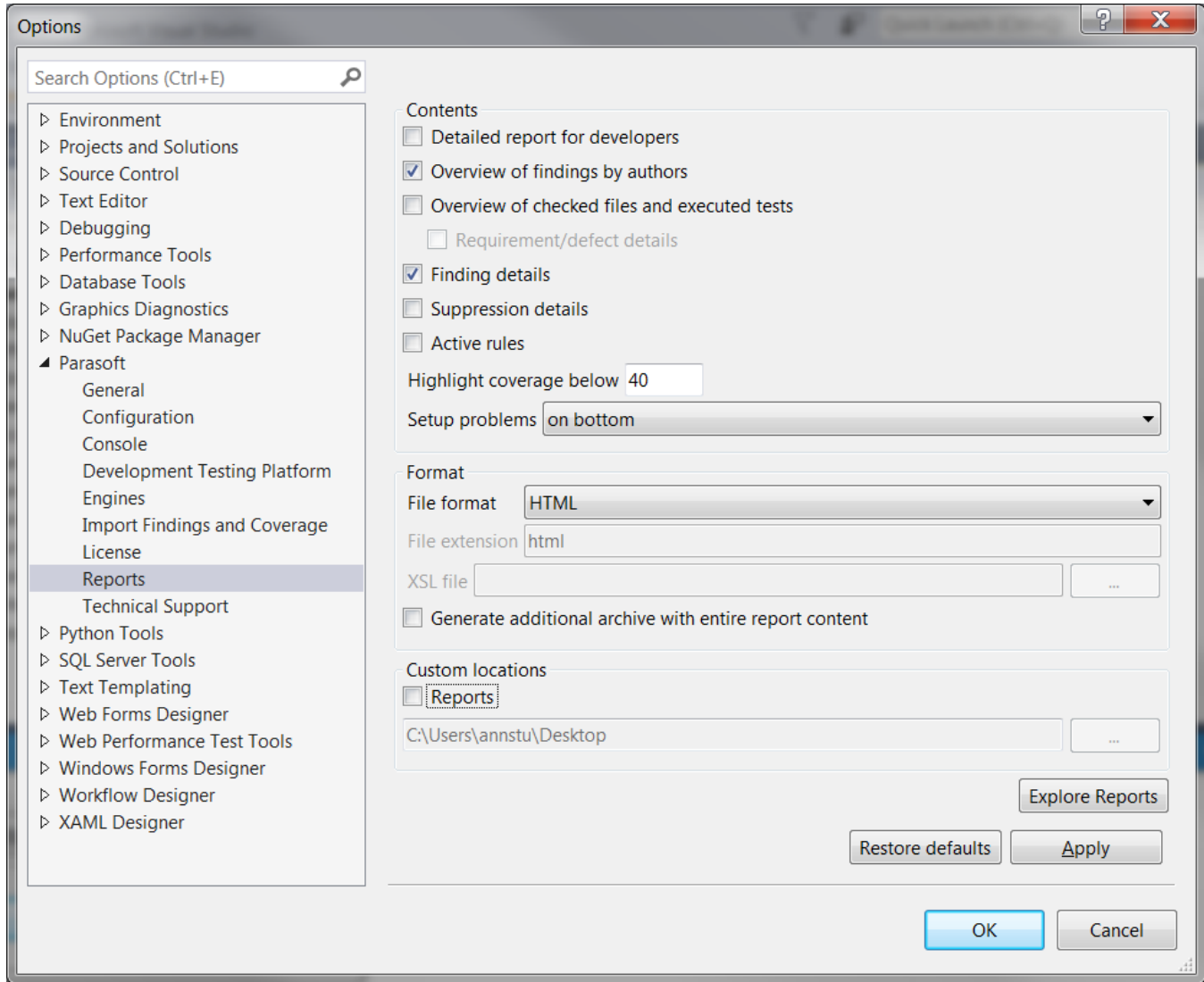


Generating Reports

You can configure report settings to specify the content, format, and location of local analysis reports.

Click **Parasoft** in the menu bar and choose **Parasoft** in the menu bar and choose **Options**. Then select Reports to view the reporting options. For details on viewing reports generated bydotTEST, see [Viewing Reports](#) in Automation User Guide.



Configuring Reports

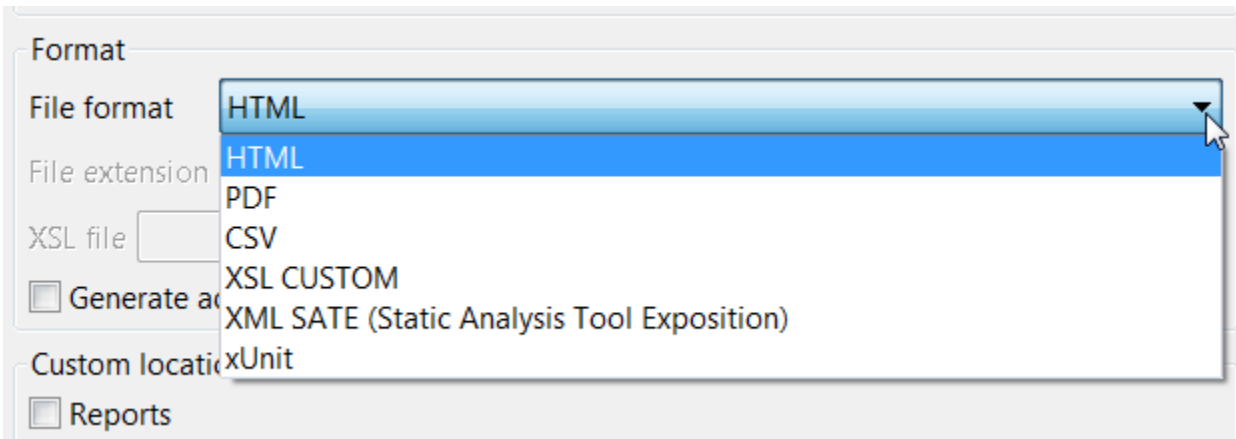
You can configure report contents, output format, and report directory.

Contents

Enable or disable options in the Contents section to include or exclude specific report sections.

Format

Choose a format from the **File format** drop-down menu. Built-in IDE output formats are available by default, but additional formats can be included by plugging in services that include other formats.



The following formats are available:

- HTML (default)
- PDF
- Custom XSL
- SATE XML (Static Analysis Tool Exposition) (see <https://samate.nist.gov/SATE4.html> for details)
- xUnit

To generate an XSL file that specifies how you want to transform the XML data, configure the following options:

- **File extension:** specifies the extension of the resulting file
- **XLS file:** specifies the the location of the XSL file

Custom locations

By default, reports are generated in an internal directory, but you can enable the **Reports** option in the Custom locations section and specify a custom directory for your reports. Click **Explore Reports** to open the reports directory.

Sharing Report Configurations

You can create a .properties file that contains report settings. Other users can import this file into their IDEs to quickly configure their reports. See [Customizing Settings](#) for instructions on exporting and importing the .properties file.