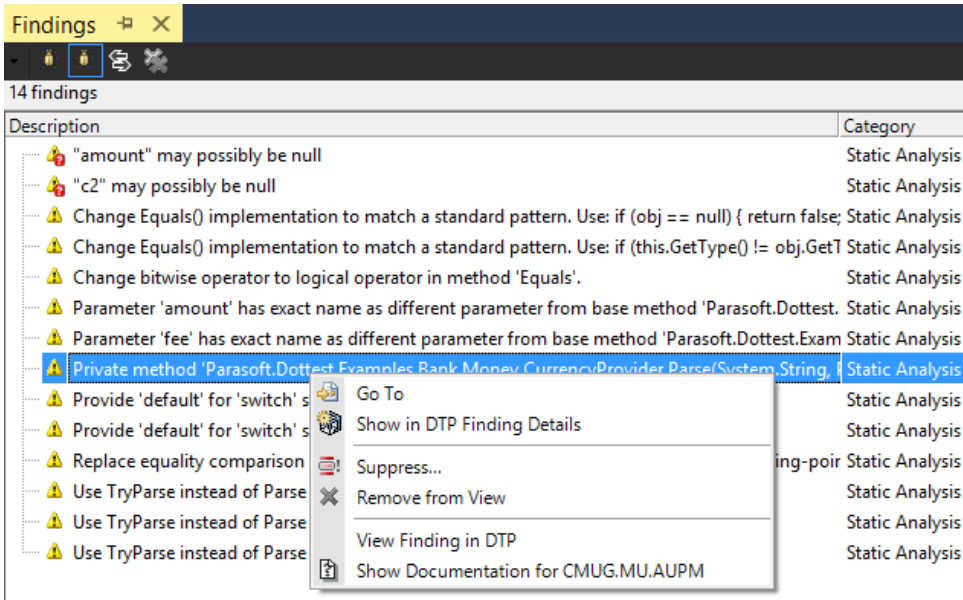


# Viewing Findings

The Findings view shows the results of local static analysis runs and unit test executions, as well as the findings imported from DTP server or an XML file (see [Importing Findings](#) for instructions on importing findings).

1. Choose **Parasoft> Show View> Findings** to open this view.  
It will display findings associated with the default finding properties (see [Finding Properties](#) for information about the properties ). You can configure the contents of the Findings view and choose the properties you want to view; see [Customizing the Findings View](#) for details.
2. Right-click a finding for additional options.



You can perform the following actions:

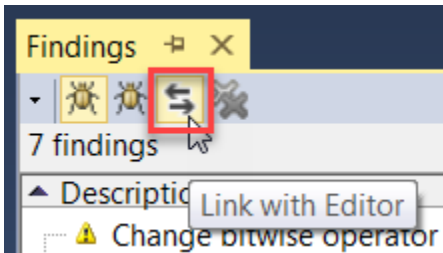
- Choose **Go To** to view the code that triggered the violation in the editor.
- Choose **Show in Findings Details** to open a hierarchical view of the lines of code associated with the finding.
- Choose **Suppress...** to suppress the violations (see [Suppressing Findings](#)).
- Choose **Remove from View** to remove the finding from the view.
- Choose **Show Documentation for [rule]** to open the rule documentation.

The red icon indicates that the file associated with the finding has been modified after the code analysis was run. As a result, the finding location within the file may not be up-to-date or the finding may have already been resolved.

## Filtering Findings by File

By default, the Findings view collects findings detected for all files in consecutive analysis runs. The **Link with Editor** option allows you to focus on findings reported for the file you are currently working on.

1. If not already open, choose **Parasoft> Show View> Findings** from the IDE main menu.
2. Click the **Link with Editor** button on the Findings view menu bar.



The Findings view will be refreshed to show only findings for the active file.