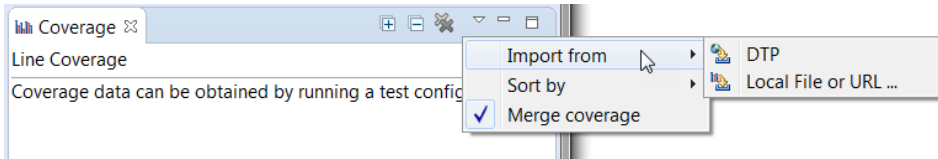


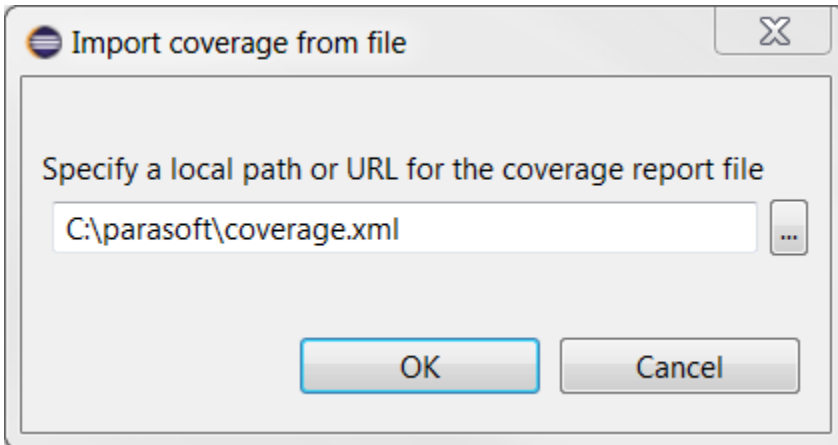
# Importing Coverage

You can import coverage from a local XML file or from DTP.

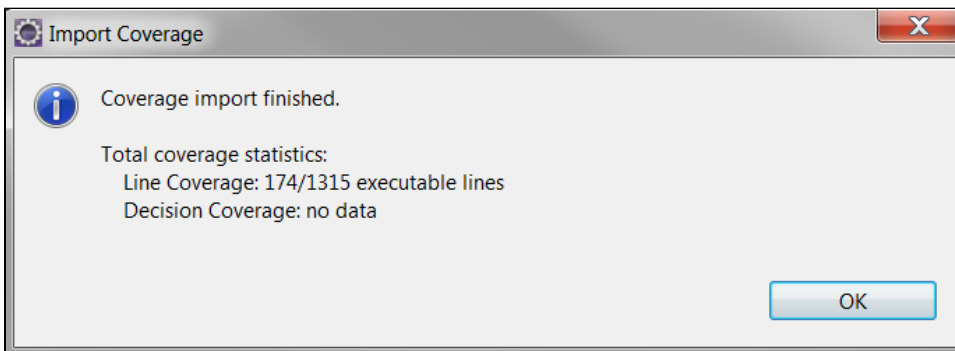
1. Click the coverage view drop-down menu and choose **Import from**> **DTP Server** or **Local File or URL...**



2. If you choose to import coverage from DTP, then the import will begin immediately.
3. If you are importing from an XML file, either enter the URL of the file or browse for the file when prompted to begin the import.



4. Click **OK** when the import finishes.



5. See [Viewing Coverage](#) for details about viewing coverage data.

