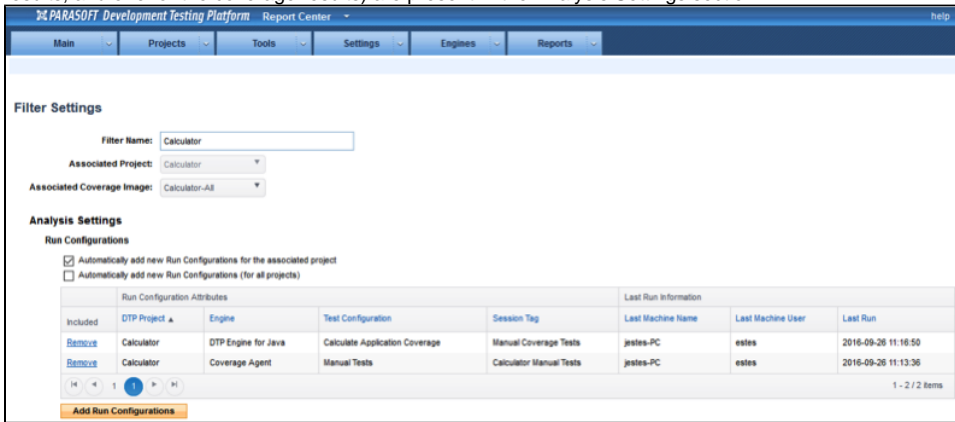
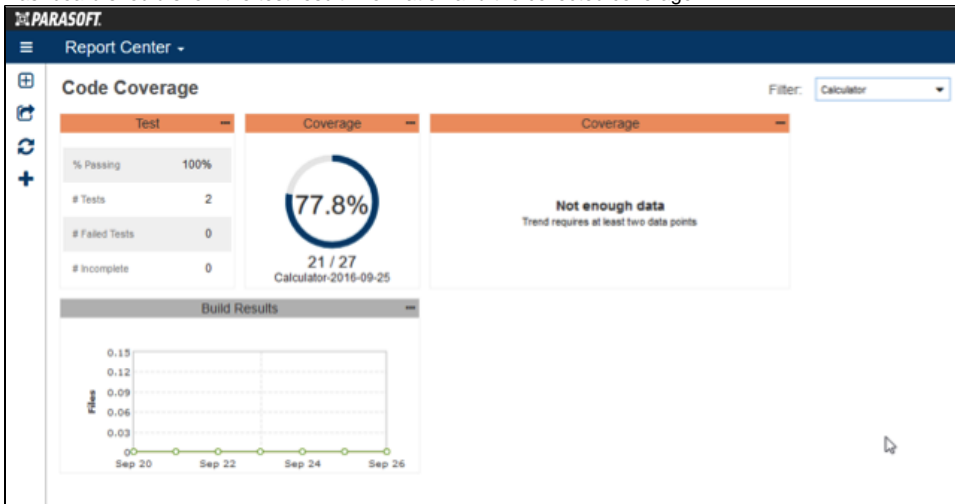


# Reviewing Results in DTP

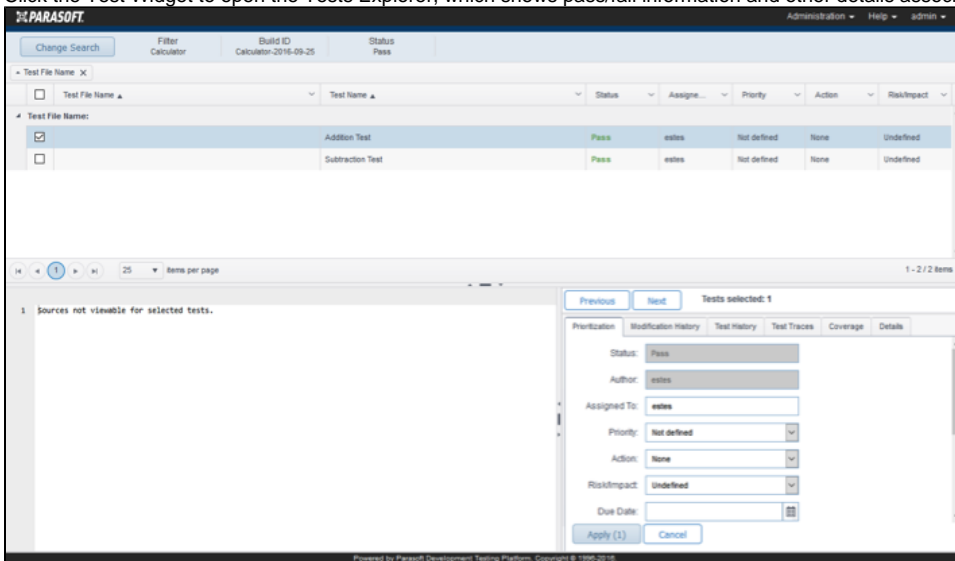
1. Log into DTP and choose **Report Center** from the **Administration** drop-down menu.
2. Choose **Projects> Filters** and click on the Calculator filter.
3. Verify that Calculator-All is selected in the Associated Coverage Image drop-down menu and that the both Run Configurations (one for the test results, and one for the coverage results) are present in the Analysis Settings section.



4. Click **Report Center** in the top title bar to return to the Report Center page.
5. Select the Calculator Project Filter and open the Code Coverage Dashboard created (see [Preparing DTP for Application Coverage](#)). The Dashboard should show the test result information and the collected coverage.



6. Click the Test Widget to open the Tests Explorer, which shows pass/fail information and other details associated with the tests that were run.



7. Return to Report Center and click on the Coverage widget to open the Coverage Explorer view, which enables you to drill down into the coverage information.

The screenshot displays the Parasoft Coverage Explorer interface. At the top, it shows the project name 'Calculator', Build ID 'Calculator-2016-09-25', and Coverage Threshold 'File (9) - 100%'. The main area is divided into three sections:

- Left Sidebar:** A tree view showing the coverage hierarchy. The selected item is 'CalculatorServlet.java' with 100.00% coverage. Other items include 'calculator' (77.78%), 'src/main/java/examples/servlet' (77.78%), and various sub-classes like 'CalculatorServlet.doAdd', 'CalculatorServlet.doDiv', 'CalculatorServlet.doGet', 'CalculatorServlet.doPut', and 'CalculatorServlet.doSub'.
- Central Code Editor:** Displays the source code for 'File (Coverage): CalculatorServlet.java'. Lines 1-13 are package and import statements. Lines 14-15 define the class and version ID. Lines 16-18 are annotations. Lines 19-21 are constructor and exception handling. Lines 22-29 are the main logic for processing a request, including parameter parsing and conditional execution. Green bars on the left of the code indicate which lines are covered by tests.
- Bottom Table:** A table showing test results for the selected file.
 

Test File Name	Test Name	Coverage	Lines covered
CalculatorServletCalculatorS	Addition Test	66.67 %	18
CalculatorServletCalculatorS	Subtraction Test	66.67 %	18

At the bottom left, a 'Details' panel shows information for the selected file: Name: CalculatorServletCalculatorS, Revision: Not available, Coverage: 100.00%, and Lines covered: 1 / 1.