

Modifying Rule Categories, IDs, Names, and Severity Levels

This topic explains how you can create new rule categories, as well as modify rule categories, rule IDs, names, and severity levels using rule mappings. This is especially helpful if you want to configure SOAtest to enforce your team's or organization's coding policy (e.g. by customizing the built-in rule names, severities, and categories to match the ones defined in your policy).

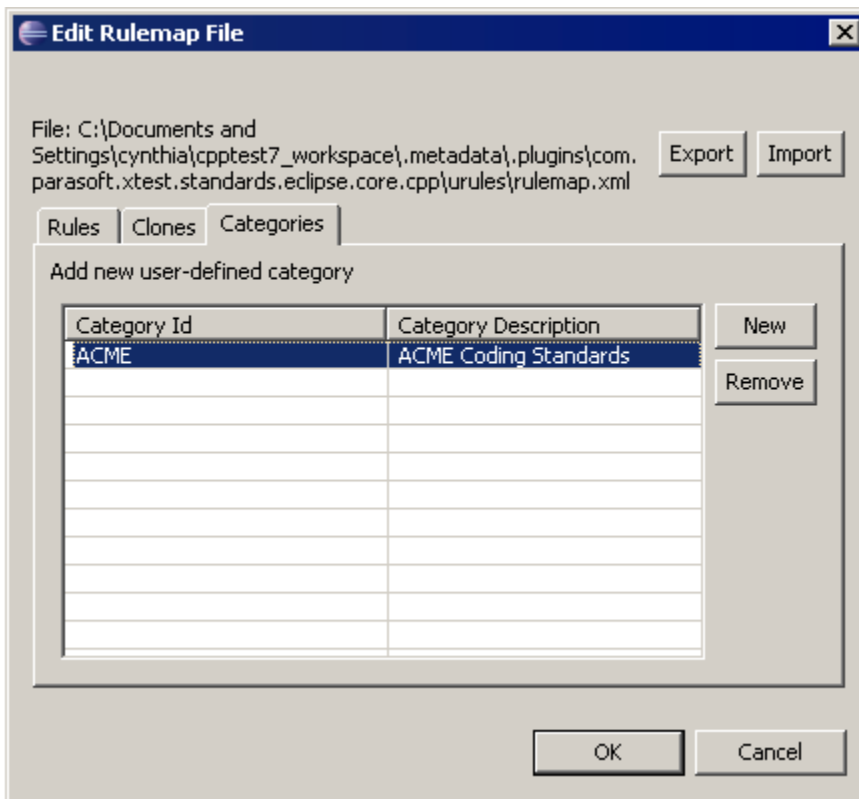
Sections include:

- [Specifying Rule Mappings](#)
- [Sharing Rule Mappings](#)

Specifying Rule Mappings

To specify rule mappings:

1. Open the Test Configurations dialog by choosing **Parasoft> Test Configurations**.
2. Select any Test Configurations category.
3. Open the **Static> Rules Tree** tab.
4. Click **Edit Rulemap**.
5. Enter your rule mapping in the Edit Rulemap File dialog that opens.
 - **To change the rule ID, name, and/or severity level:** Add an entry to the **Rules** tab. A map entry defines a rule map which can change the specified built-in rule's category ID, name, and/or severity level. Enter the current rule ID (for instance, SECURITY.RULENAME) in the **Original ID** column, then enter the desired changes in the appropriate column.
 - If you want to change the rule ID, enter the desired rule ID in the **Mapped ID** column.
 - If you want to change the severity, select it from the **Severity** column drop down menu.
 - If you want to change the rule name, enter the desired name in the **Header** column.
 - **To copy a rule to another rule ID and/or severity level:** Add an entry to the **Clones** tab. Cloning rules is useful for mapping a single rule instance to multiple rule IDs. Enter the current rule ID (for instance, SECURITY.RULENAME) in the Original ID column, then enter the desired clone rule ID (for instance, SECURITY.RULE1) in the Clone ID column and/or select the desired clone severity level from the Severity column drop down menu.
 - **To add a new rule category:** Add an entry to the **Categories** tab. Enter a new category ID in the Category ID column, then enter a brief category description in the Category Description column.



After you enter rule mappings in the SOAtest UI, they are saved in a simple text file named `rulemap.xml` in your SOAtest installation directory.

Sharing Rule Mappings

Through Team Server

If you are using Team Server and you want team members to share the rule changes, you should upload the `rulemap.xml` file to the Team Server.

To upload the file to Team Server:

- See [Configuring Test Configurations and Rules for Policies](#).

If a machine has access to both a local `rulemap.xml` file and a team `rulemap.xml` file, the team file will take precedence over the local file.

Through Export/Import

Even if you do not have Team Server, you can share rule mappings by exporting/importing them.

To export rule mappings:

1. Open the Rulemap dialog by clicking the **Edit Rulemap** button in the **Static> Rule Tree** tab of the Test Configuration panel.
2. Click the **Export** button, then use the file chooser to indicate where you want to save the rulemap file.

To import a rule mappings:

1. Open the Rulemap dialog by clicking the **Edit Rulemap** button in the **Static> Rule Tree** tab of the Test Configuration panel.
2. Click the **Import** button, then use the file chooser to select the appropriate rulemap file.