

Header Data Bank

This topic explains how to configure and apply the Header Data Bank tool that extracts headers from one message and makes them available as parameters in another. Sections include:

- [Understanding Header Data Bank](#)
- [Configuring Header Data Bank](#)
- [Viewing the Data Bank Variables Used During Test Execution](#)

Understanding Header Data Bank

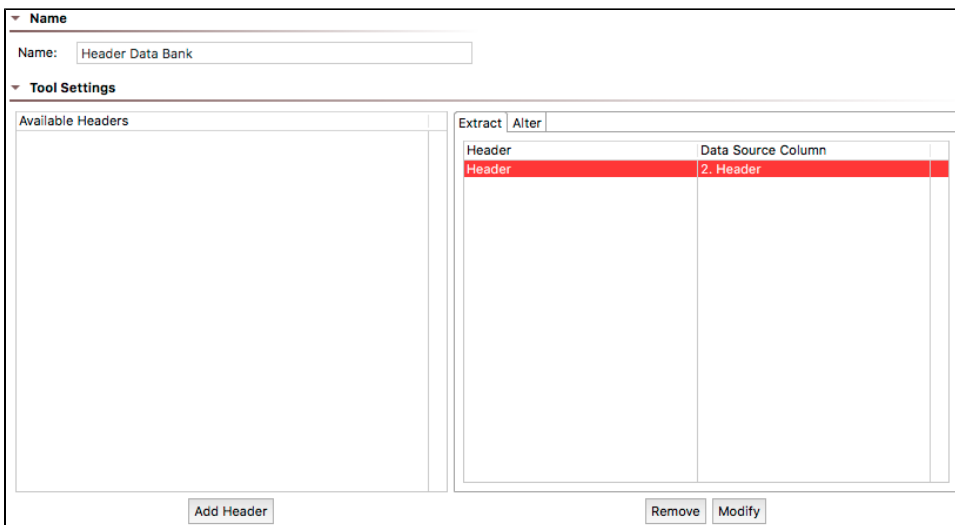
The Header Data Bank tool enables you to extract values from HTTP and JMS headers from one place and use those values in another place. The Header Data Bank enables you to use a header value from the SOAP response of Tool 1 as a parameter in the SOAP request of Tool 2.

The Header Data Bank tool can be chained to any other tool that outputs HTTP or JMS headers. It can extract values from the HTTP or JMS header and makes that information available for later use.

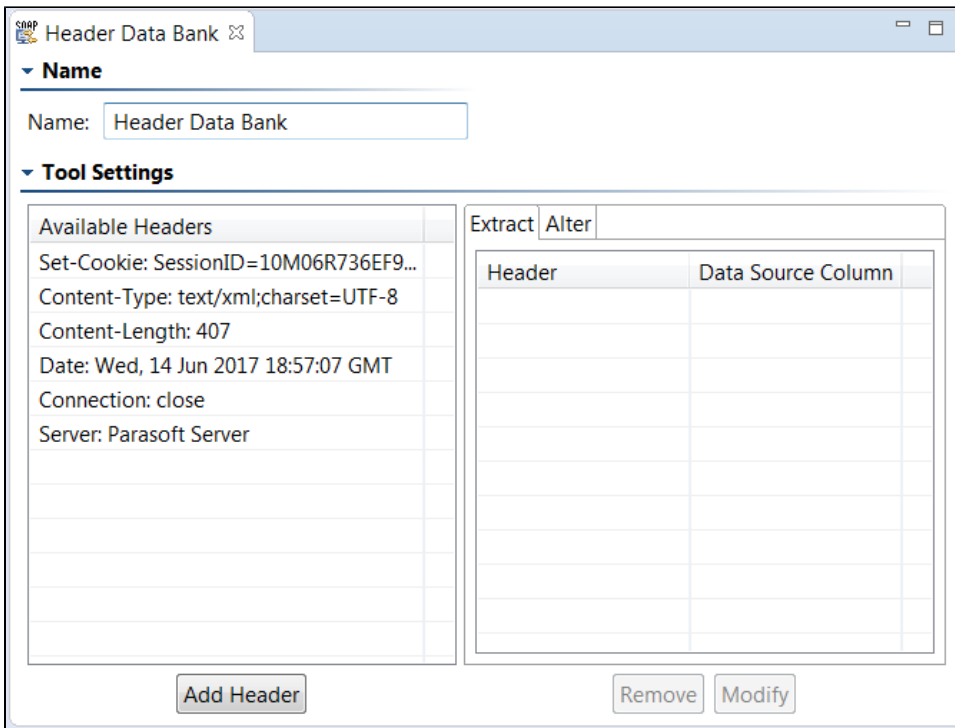
Configuring Header Data Bank

To configure the Header Data Bank tool:

1. Ensure that you have a test suite with at least two tools.
2. Right-click the node for the tool associated with the data you want to extract, then choose **Add Output**.
3. In the **Add Output** wizard, indicate where you want to extract the value from (e.g., Response or Request Transport Header) and click the **Finish** button. A **Transport Header> Header Data Bank** node displays in the Tool 1 branch.
4. Double-click the **Transport Header> Header Data Bank** node. The following Header Data Bank operations display in the right GUI panel.
 - **Name:** Specifies the name of the Data Bank tool.
 - **Available Headers:** Specifies the headers available in the HTTP or JMS traffic. This field is blank after first adding the Header Data Bank node to the tool. The Available Headers will be automatically filled after the test suite is run.
 - **Extract/Alter tabs:** Specifies the headers you would like to extract or alter for use in another message. You can extract a header through the **Extract** tab and you can alter a header through the **Alter** tab.
5. If using the tool in Virtualize, click **Add Header** to add a default header. You can select the values added to these columns and click **Modify** to change the default header name.

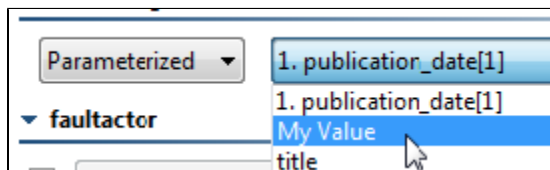


If using the tool in SOAtest, right-click the main test suite tree node and select the **Test Using 'Example Configuration'** from the shortcut menu to initialize the Header Data Bank and verify the available headers.



6. To extract a header, select the **Extract** tab and complete one of the following:

- To extract a header from the Available Headers, select a header from the Available Headers view and click the **Add Header** button. After selecting a header, it is added to the **Selected Headers** list in the **Extract** tab. The **Selected Headers** list consists of the following columns:
 - Header:** Displays the selected Header name. To edit a selected Header, double-click the desired Header in the **Header** column and edit the Header text.
 - Custom column name:** Specifies the name of the data source column in which to store the value. Values are stored in an internal data source unless you specify otherwise (e.g., if you select **Writable datasourcecolumn** or **Variable**). This is the name you will use to reference the value in other places. For example, if it is stored in a data source column named **MyValue**, you would choose **MyValue** as the parameterized value. You could also reference it as `${My Value}` in literal or multiple response views.



- Write to all columns that match:** Enables storing the value in all columns whose name contains the given string. When extracting multiple values from a message, each value will be written across all the columns that match. In contrast, if you pick a single writable data source column (the above option), then the values will be written down the column across multiple rows.
 - Variable:** Enables saving the value in the specified variable so it can be reused across the current test suite (SOAtest) Response suite or Action suite (Virtualize). The variable must already be added to the current test suite as described in [Defining Variables in SOAtest](#).
- Any values set in this manner will override any local variable values specified in the suite properties panel.
- To extract a Header that is not in the Available Headers, click **Add Header**. A new Header will be added to the **Selected Headers** list in the **Extract** tab.

7. To alter a Header, select the **Alter** tab and complete one of the following:

- To alter a Header from the Available Headers, select a node from the Available Headers view and click the **Add Selected Nodes** button. After selecting a header, it is added to the **Selected Headers** list in the **Alter** tab. The **Selected Headers** list consists of the following columns:
 - Header:** Displays the selected Header name. To edit a selected Header, double-click the desired Header in the **Header** column and edit the Header text.
 - Data Source column name:** Data Source column names of Selected Headers will display as parameterized values in the tool panel, meaning that you will be able to use these Selected Elements in another tool to send as part of the message.
- To alter a Header that is not in the Available Headers, click **Add Header**. A new Header will be added to the **Selected Headers** list in the **Alter** tab.

Using the Extracted Value

After adding and/or modifying the extraction, configure the header values and properties (in the **Headers** tab) that you want to use the extracted data.

Set the value to **Parameterized**, and choose the appropriate item from the drop-down. For example, if you saved the value to the "MyVariable" variable, you would select it as follows.

▼ MQRFH2 Fields

Version:	Fixed ▼	<input type="text"/>
Encoding:	Fixed ▼	<input type="text"/>
CodedCharSetId:	Parameterized ▼	MyVariable ▼

Viewing the Data Bank Variables Used During Test Execution

You can configure the Console view (**Window> Show View> Console**) to display the data bank variables used during test execution. For details, see [Monitoring Variable Usage](#).