

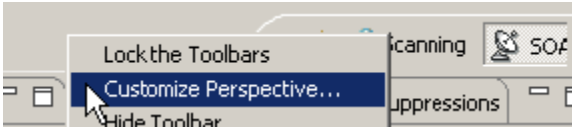
Viewing WSDL Contents

This topic explains how to view and modify WSDL URL contents within SOAtest—in a web browser or in a visual editor.

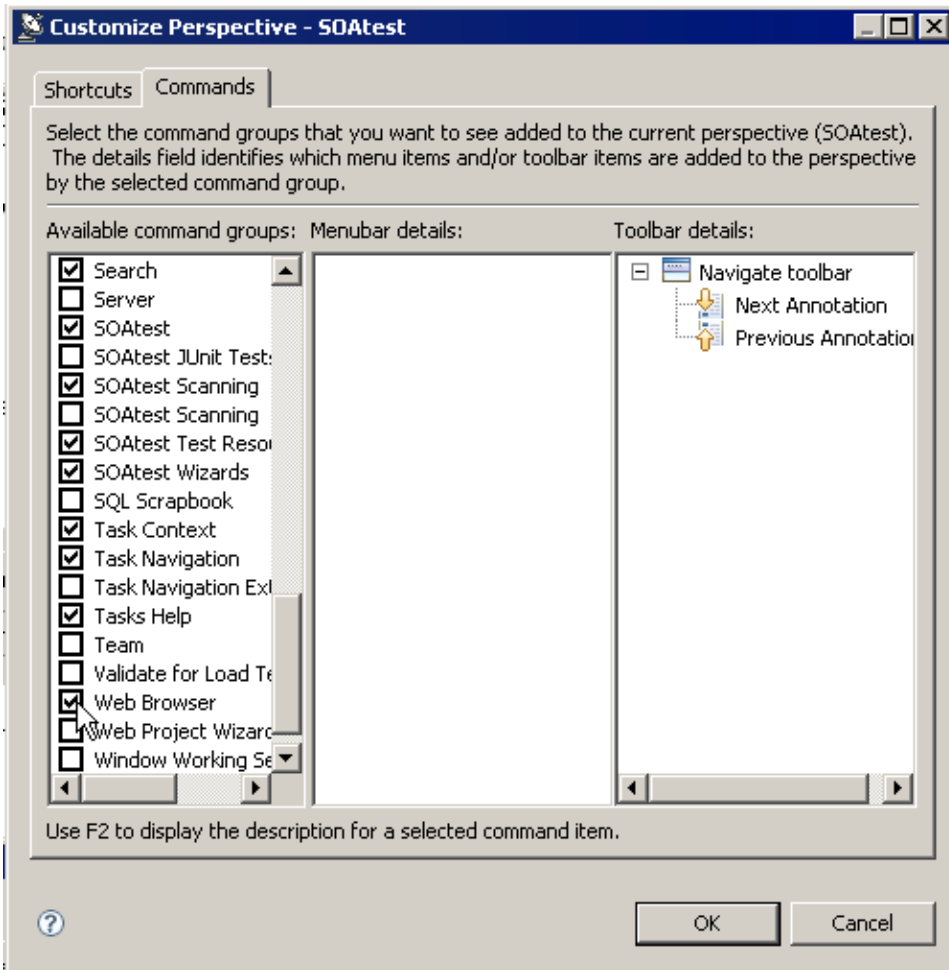
Viewing in a Web Browser

To view WSDL URL contents in a web browser:

1. Customize the perspective as follows:
 - a. Right-click the empty area of the toolbar (the gray area between the toolbar buttons and the tab of perspective icons), then choose **Customize Perspective** from the shortcut menu.



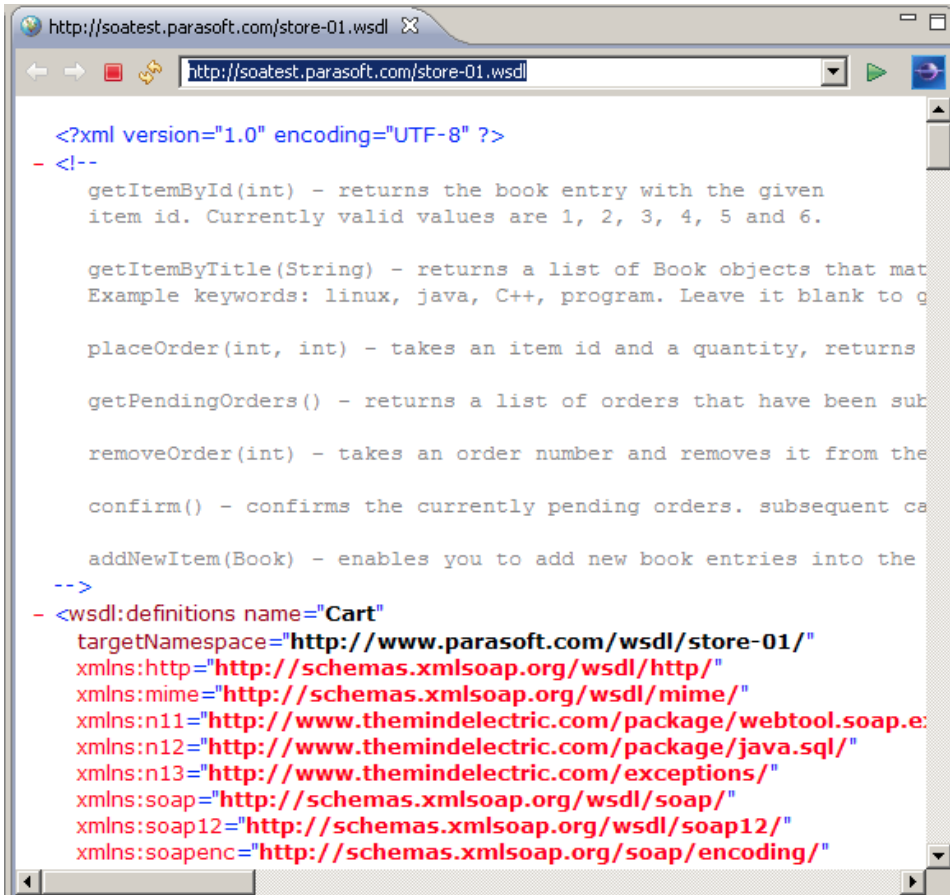
- b. Open the **Commands** tab in the Customize Perspective dialog.
- c. Enable the **Web Browser** option.



- d. Click **OK**. Note that a new **Open Web Browser** button will appear in the tool bar.
2. Click the new **Open Web Browser** toolbar button.



3. In the editor that opens, enter the URL for the WSDL you want to view.



```
<?xml version="1.0" encoding="UTF-8" ?>
- <!--
  getItemById(int) - returns the book entry with the given
  item id. Currently valid values are 1, 2, 3, 4, 5 and 6.

  getItemByTitle(String) - returns a list of Book objects that match
  Example keywords: linux, java, C++, program. Leave it blank to get
  all.

  placeOrder(int, int) - takes an item id and a quantity, returns
  the order number.

  getPendingOrders() - returns a list of orders that have been submitted
  but not yet confirmed.

  removeOrder(int) - takes an order number and removes it from the
  list.

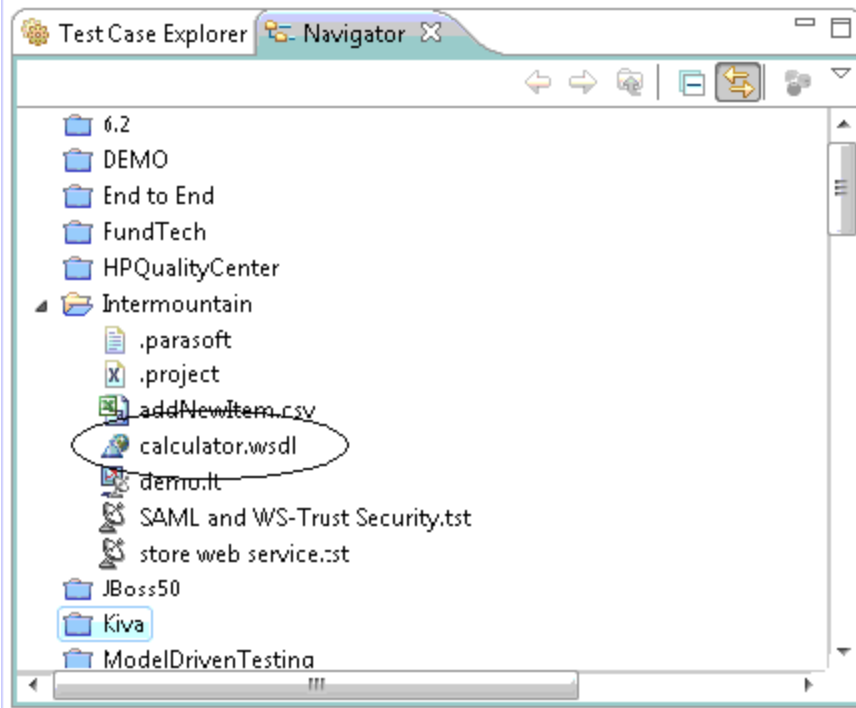
  confirm() - confirms the currently pending orders. subsequent calls
  will have no effect.

  addNewItem(Book) - enables you to add new book entries into the
  store.
-->
- <wso:definitions name="Cart"
  targetNamespace="http://www.parasoft.com/wsdl/store-01/"
  xmlns:http="http://schemas.xmlsoap.org/wsdl/http/"
  xmlns:mime="http://schemas.xmlsoap.org/wsdl/mime/"
  xmlns:n11="http://www.theminelectric.com/package/webtool.soap.encoding/"
  xmlns:n12="http://www.theminelectric.com/package/java.sql/"
  xmlns:n13="http://www.theminelectric.com/exceptions/"
  xmlns:soap="http://schemas.xmlsoap.org/wsdl/soap/"
  xmlns:soap12="http://schemas.xmlsoap.org/wsdl/soap12/"
  xmlns:soapenc="http://schemas.xmlsoap.org/soap/encoding/"
```

Viewing in a Visual Editor

To view a WSDL file in a visual editor:

1. Using a web browser, save your WSDL file into one of your SOAtest projects. Use the file extension .wsdl.
2. Switch to the **Navigators** view. This allows you to see other file resources in the project (in addition to .tst files).



3. Double-click the node representing the WSDL file that you saved. You will see a visual view representing the WSDL operations, types and so on.

