

# Creating Tests From a WSIL

To automatically create a test suite from a valid WSIL document, complete the following:

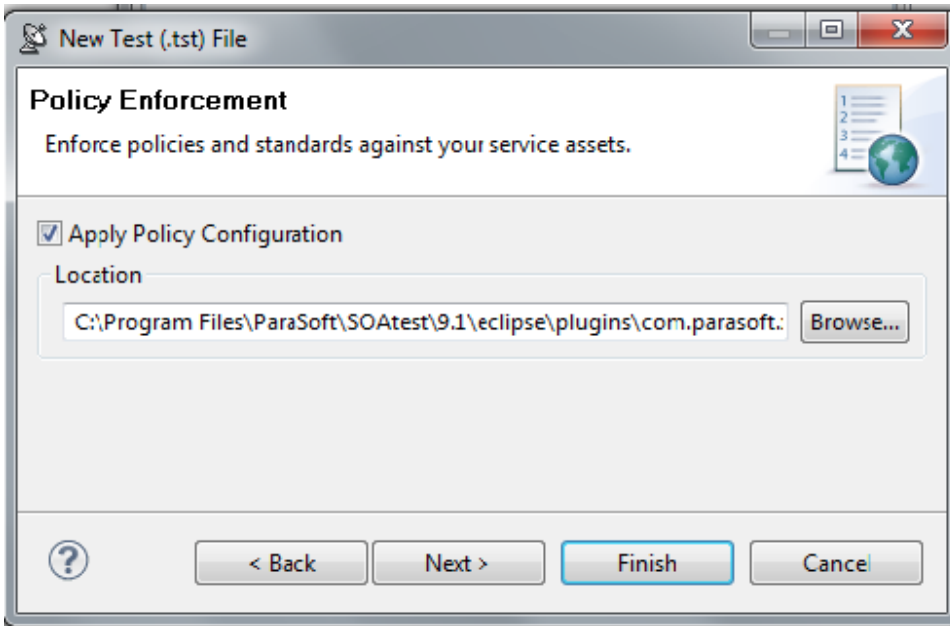
1. Choose the **Other> WSIL** option in one of the available test creation wizards. For details on accessing the wizards, see:
  - [Adding a New .tst File to an Existing Project](#)
  - [Adding a New Test Suite](#)
2. In the WSIL wizard page, enter a valid WSIL URL in the **WSIL URL** field, or click the **Browse** button to locate a URL.



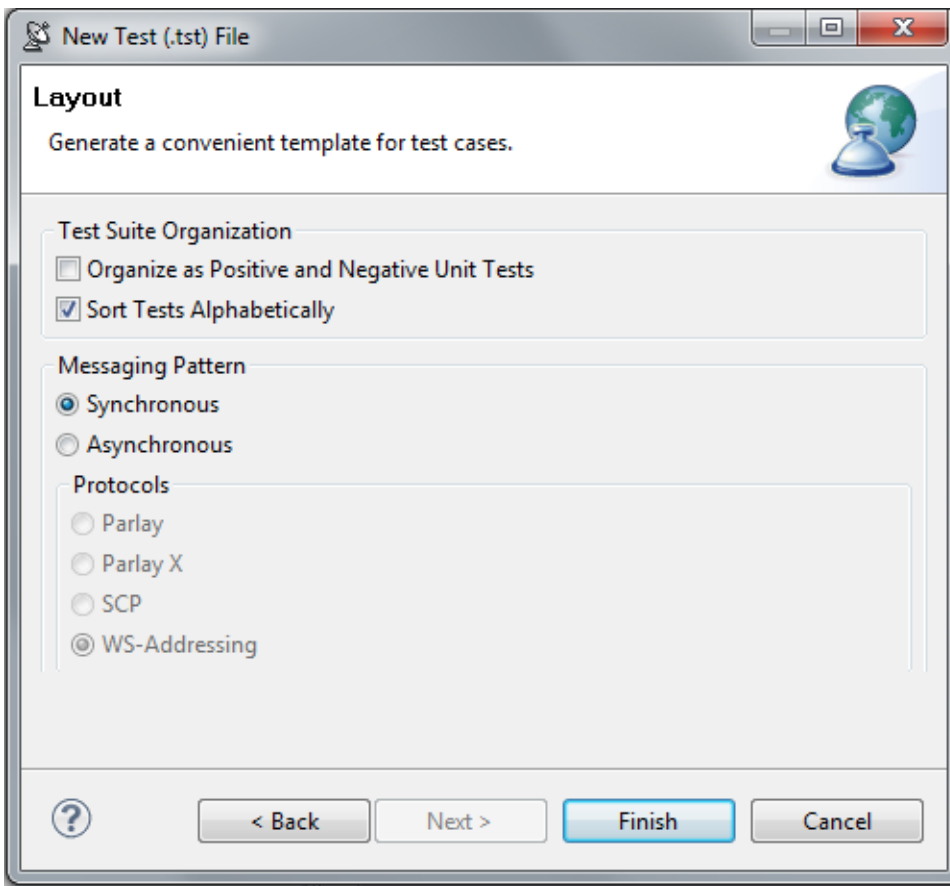
## Note

The remaining steps are optional. Once you enter a valid WSIL URL, you can go ahead and click the **Finish** button and SOAtest will generate a suite of test cases that test every object associated with the WSDLs within the WSIL you entered. If you would like to configure the test suite further, continue to the next step.

3. Select the **Create Functional Tests from the WSDL** checkbox.
4. To create a separate test suite that generates a series of tests to verify every aspect of the WSDL, select the **Create tests to validate and enforce policies on the WSDL** checkbox.
5. Click **Next**. The **Policy Enforcement** dialog opens.



6. Select the **Apply Policy Configuration** check box. This will create WSDL and functional tests that will enforce the assertions defined in the specified policy configuration.
  - The default policy configuration, `soa.policy`, is a collection of industry-wide best practices. To use a custom policy configuration, you can either use the **Browse** button to select a policy configuration or the policy configuration's path can be entered in the text field. For details on policy enforcement, see [SOA Policy Enforcement: Overview](#).
7. Click the **Next** button to advance to the **Layout** dialog.



8. (Optional) Select the **Organize as Positive and Negative Unit Tests** checkbox to create both positive and negative tests for each operation since it is important to test situations where we send expected data as well as unexpected data to the server. The default value is configured to **Sort Tests Alphabetically**.
9. (Optional) Select the **Asynchronous** radio button and choose **Parlay**, **Parlay X**, **SCP**, or **WS-Addressing** to create asynchronous test suites. For more information on asynchronous testing, see [Creating Asynchronous Tests](#).
10. Click the **Finish** button. SOAtest will generate a suite of test cases that test every object associated with the WSDL you entered.