

Form XML View Options

This topic covers the Form XML view, which provides a tree view of the XML message, allowing you to manipulate XML manipulation through the GUI.

Sections include:

- [Overview](#)
- [Manipulating the XML View Tree](#)
- [Manipulating the XML Configuration Tabs](#)
- [Using Data Sources with Form XML: Parameterized Values](#)
- [Using Data Sources with Form XML: Excluding Elements and Attributes](#)

Overview

The literal XML is graphically represented in the Form XML mode, giving you a flexible alternative in configuring XML messages. You can add, remove, and rename XML components of the XML message. In addition, if any data sources are available, data source values can be used in configuring XML messages. Any changes made in the Form XML mode will also be made in the LiteralXML mode and vice versa.

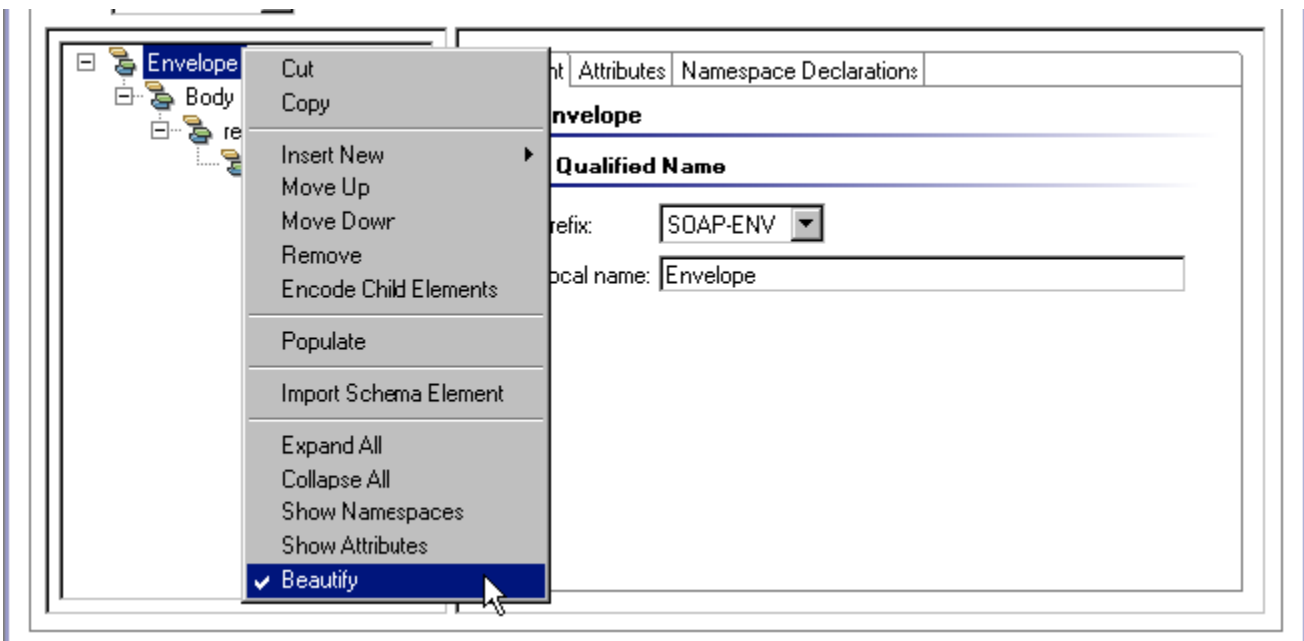
If Form XML is selected as the SOAP Envelope, the lower part of the panel consists of an XML View Tree and XML Configuration Tabs.

Populating the Form Input View from the Literal XML view

If you want a simple way to view and work with an existing XML message (e.g., a sample from developers, traced from the server, from legacy testing tools, etc.), you can copy it into the LiteralXMLview, then open the Form Input view. Once a message is copied into the LiteralXMLview, the Form Input view is populated in a schema-aware and schema-constrained manner that is much simpler to edit, manage, and parameterize.

Manipulating the XML View Tree

The XML View Tree (located in the lower left corner of the right GUI panel) displays the literal XML as a tree, with each tree node representing an element. By right-clicking any of the nodes in the XML View Tree, a shortcut menu appears.



The XML View Tree shortcut menu contains the following options:

Option	Description
--------	-------------

Cut /Copy /Paste	Select to cut, copy, or paste an XML node in Form XML. When attempting to paste an element within the root element, a dialog will display asking you whether to replace the entire content, or add as a child. You can perform cut, copy, and paste operations across multiple XML View Trees within Diff tools, SOAP Clients, HTTP Traffics, etc. These operations persist parameterization and any other exclude/encode settings.
Insert New	Select to insert a new Element, Attribute, or Namespace Declaration. Depending on your selection, the corresponding tab will display parameter options.
Move Up	Select to move a node up within the XML View Tree.
Move Down	Select to move a node down within the XML View Tree.
Remove	Select to remove a node from the tree.
Encode Child Elements	Select to encode a subtree of elements as text content for its parent element. If this option is selected for a particular node, all child elements of that node will display as <i>italicized</i> in the Form XML tree, and will be encoded as text within the parent element, rather than as XML. If this option is not selected, child elements will not be encoded and will remain as sub-elements.
Import Schema Element	Select to choose elements for both the body and the header. After selecting this option, a dialog appears from which you can load declared elements from a schema location. After loading elements, you can select multiple elements for the SOAP header. Once you click OK, a SOAP Envelope will be created based on the chosen element definitions.
Populate	Fills SOAP array and element parameters. This also sets any element nils to false and expands them out. This command is only available if the tool is created from a WSDL.
Expand All	Select to expand all nodes in the XML View Tree.
Collapse All	Select to collapse all nodes in the XML View Tree.
Show Namespaces	Select to view the namespaces within the XML View Tree.
Show Attributes	Select to view the attributes within the XML View Tree.
Beautify	Select to beautify all well-formed XML fragments.
Compact	Select to reformat XML to fit on one line.

Manipulating the XML Configuration Tabs

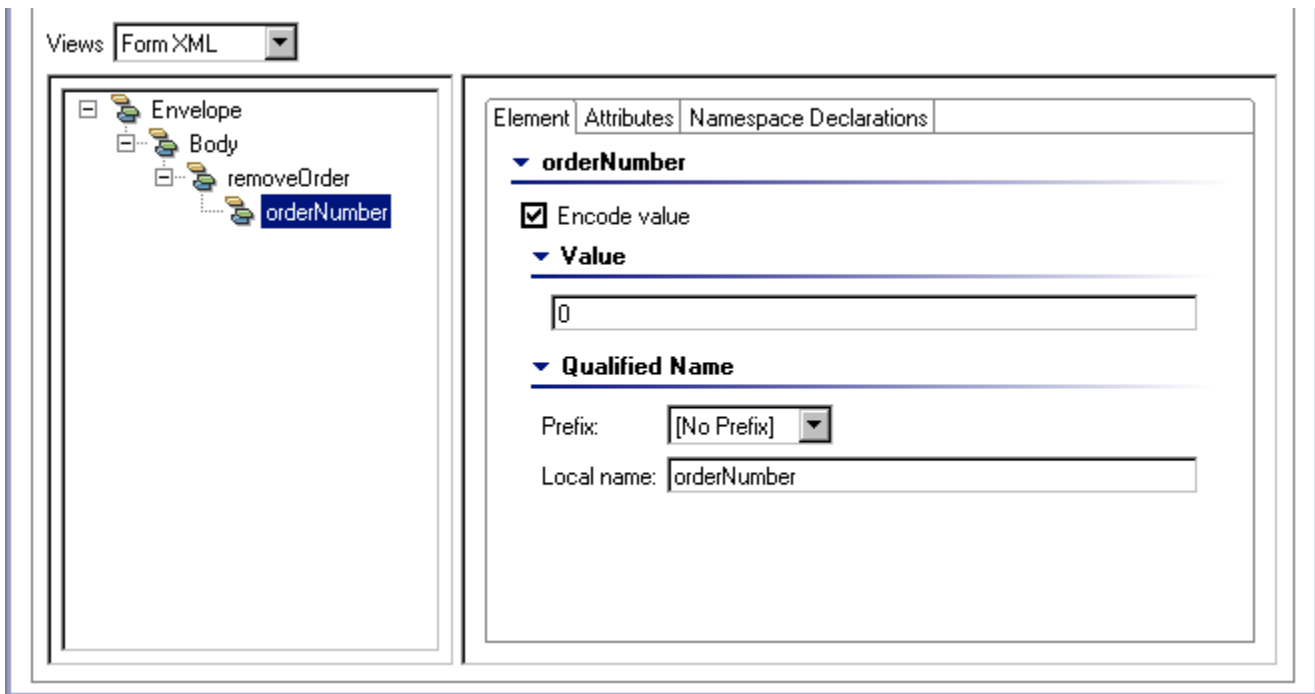
The **XML Configuration Tabs** (Elements, Attributes, Namespace Declarations) allow you to add, remove, and rename XML components. To add or modify an XML component, select the appropriate node from the XML View Tree, and then click on the appropriate XML configuration tab. The following tabs are available:

- [Element tab](#)
- [Attributes Tab](#)
- [Namespace Declarations Tab](#)

Element tab

Displays options to modify Element parameters of the selected node from the XML View Tree.

To add a new Element, right-click the desired node from the XML View Tree and select **Insert New> Element** from the shortcut menu. A **NewElement** node will appear underneath the node you right clicked. Select the **NewElement** node to configure it.

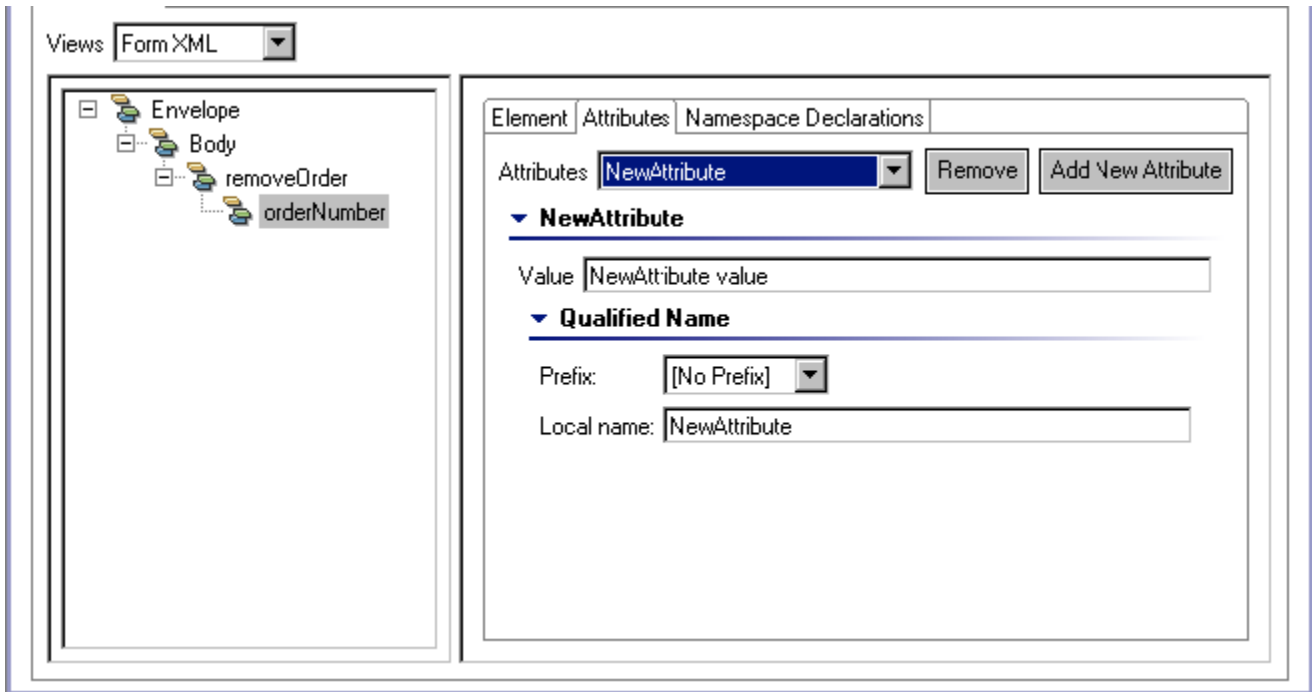


The following options are available in the **Element** tab of the Form XML mode:

Option	Description
Encode Value	(Only available for nodes that contain no child nodes) Select to encode an escaped XML fragment value as text. For example, if you are sending values such as <UserName>, you can encode the less than (<) and greater than (>) characters as < and >. This way, the XML parser will not misconstrue the <UserName> value as an XML tag, but rather as text. This feature also works with parameterized values stored in a data source.
Use Data Source: Exclude with empty string	(Only available if a data source is specified in the related tool) Allows you to control whether elements and attributes are sent depending on the values in a data source. For more information, see Using Data Sources with Form XML: Excluding Elements and Attributes .
Value	(Only available if the Element has no children elements within it) Specifies the content value of the Element. If a data source is available, you will have the option to choose either a Fixed or a Parameterized value from a drop-down menu. For more information, see Using Data Sources with Form XML: Parameterized Values .
Prefix	Specifies the namespace prefix for the Element. Depending on the namespace declarations of the selected element and its ancestors, the options in the Prefix drop-down menu will vary.
Local name	Specifies the local name for the Element. If a data source is available, you will have the option to choose either a Fixed or a Parameterized local name from a drop-down menu. For more information, see Using Data Sources with Form XML: Parameterized Values .

Attributes Tab

Displays options to add and/or modify Attribute parameters of the selected node from the XML View Tree.

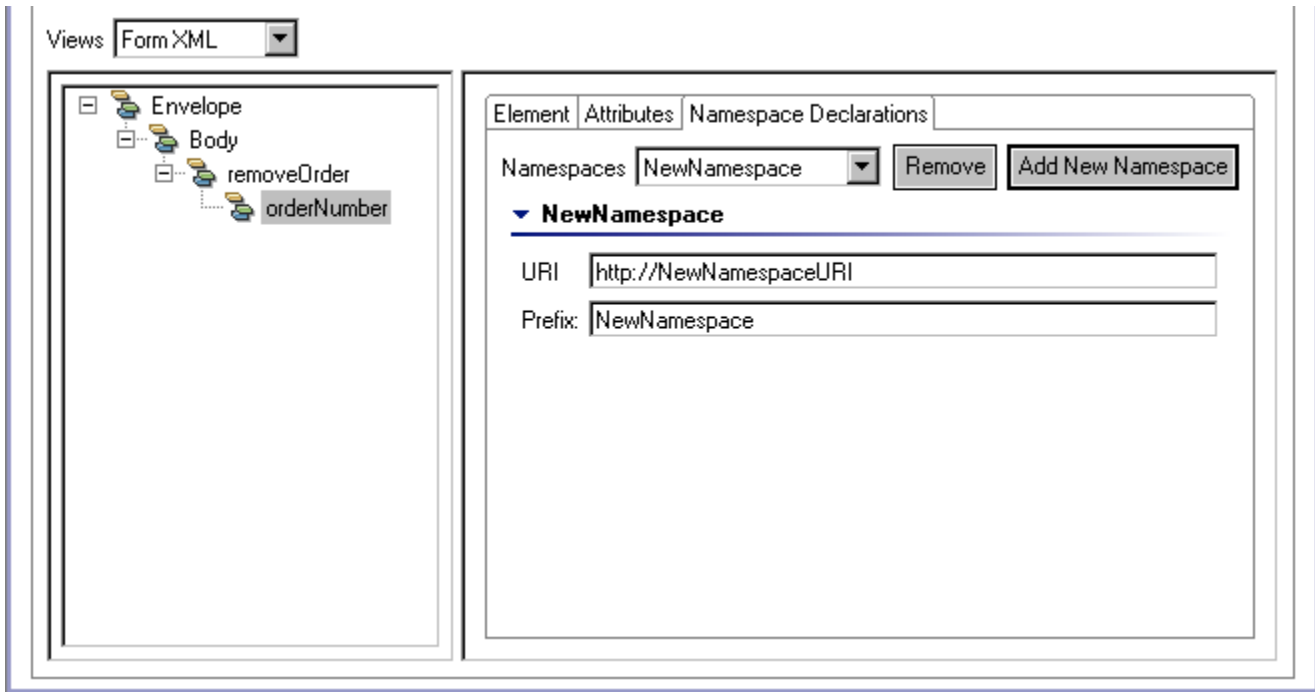


The following options are available in the **Attributes** tab of the Form XML mode:

Option	Description
Attributes	Displays a list of the current attributes of the selected node.
Remove	Click to remove the selected attribute from the Attributes list.
Add New Attribute	Click to add a new attribute to the Attributes list.
Use Data Source: Exclude with empty string	(Only available if a data source is specified in the related tool) Allows you to control whether elements and attributes are sent depending on the values in a data source. For more information, see Using Data Sources with Form XML: Parameterized Values .
Value	Specifies the content value of the Attribute. If a data source is available, you will have the option to choose either a Fixed or a Parameterized value from a drop-down menu. For more information, see Using Data Sources with Form XML: Parameterized Values .
Prefix	Specifies the namespace prefix for the Attribute. Depending on the namespace declarations of the selected element and its ancestors, the options in the Prefix drop-down menu will vary.
Local name	Specifies the local name for the Attribute. If a data source is available, you will have the option to choose either a Fixed or a Parameterized local name from a drop-down menu. For more information, see Using Data Sources with Form XML: Parameterized Values .

Namespace Declarations Tab

Displays options to add and/or modify Namespace Declaration parameters of the selected node from the XML View Tree:



The following options are available in the **Namespace Declarations** tab of the Form XML mode:

Option	Description
Namespaces	Displays a list of the current namespace declarations of the selected node.
Remove	Click to remove the namespace from the Namespaces list.
Add New Namespace	Click to add a new namespace declaration to the Namespaces list
URI	Specifies the URI of the namespace declaration. If a data source is available, you will have the option to choose either a Fixed or a Parameterized URI from a drop-down menu. For more information, see Using Data Sources with Form XML: Parameterized Values .
Prefix	Specifies the prefix of the namespace declaration. If a data source is available, you will have the option to choose either a Fixed or a Parameterized Prefix from a drop-down menu. For more information, see Using Data Sources with Form XML: Parameterized Values .

Using Data Sources with Form XML: Parameterized Values

If a data source is specified in the upper right corner of the tool, you will be able to use the values in that data source as parameterized values in the XML components of the Form XML mode. For example, you can use all the values in a data source column as a content value for an Element.

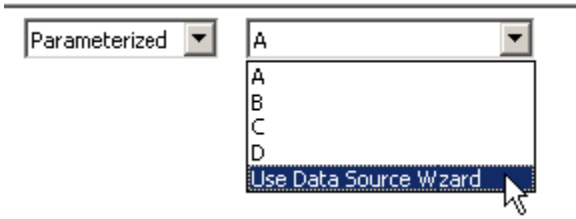
If a data source is specified in the tool, you will have a choice to select either a **Fixed** or a **Parameterized** value. If a data source is not available, then only a Fixed value can be entered.

- **Fixed** values are the literal values that you specify by entering an input into the available text field. When applicable, you can reference variables using the `${name_of_variable}` notation.

Fixed ▼

- **Parameterized** values are the values from a data source column, or from the Data Source wizard (which allows you to parameterize the current tool with values from other tools). When configuring Parameterized values, a drop-down box containing column names from a data source will

become available.



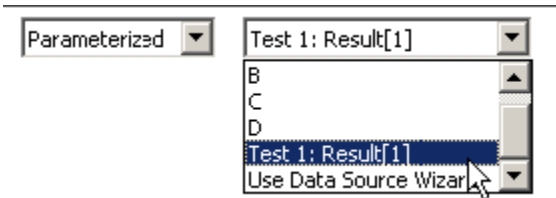
Using Values Stored in an Existing Data Source Column

The column names in the drop-down menu to the right of the Parameterized field correspond to the data source columns specified in the tool. All values in the data source column that you select will be sent as the literal value by the tool.

Using Values from Other Tools

To use a value from another tool, choose **Use Data Source Wizard** from the box that also displays column names. See [XML Data Bank](#), for more details on completing this wizard.

Once a value is extracted, it will appear in the list of available columns.



Using Data Sources with Form XML: Excluding Elements and Attributes

You can create a data source that controls whether or not the tool includes or excludes particular elements and attributes as part of the message.

If the **Use Data Source: Exclude with empty string** check box is selected in either the **Element** or **Attribute** Form XML Configuration Tabs, the tool will use an empty string (a string of length 0) of the specified data source as a condition that controls whether or not to include or exclude elements and attributes as part of the message. For example, you can create a data source that contains values for users' names and passwords. By entering empty strings that correspond to the password values, you can exclude these password values from the message.

To exclude an element or attribute from a message:

1. Create a data source with columns that contain the values you would like to send as part of a message, and columns that contain the empty and non-empty strings that signify the inclusion or exclusion of an element.
In the following data source example, the **Value** column contains values of **name** and **password**, and the **Exclude Password** column has a value of **Don't Exclude**, as well as an empty string.

	Values	Exclude Pas...	C	D	E	F	G	H
1	name	Don't Exclude						
2	password							
3								
4								
5								
6								
7								
8								
9								
10								
11								
12								
13								
14								

For more information on configuring data sources, see [Parameterizing Tests with Data Sources, Variables, or Values from Other Tests](#).

2. Ensure that the correct data source is selected from the **Data Source** menu in the tool panel.
3. Check the **Use Data Source: Exclude with empty string** check box in either the **Element** or **Attribute** Form XML Configuration Tab.
4. In the drop-down box next to the **Use Data Source: Exclude with empty string** check box, select the appropriate column that contains the empty string.

NewElement

Encode Value Use Data Source: Exclude with empty string Exclude Password

Value

Parameterized Values

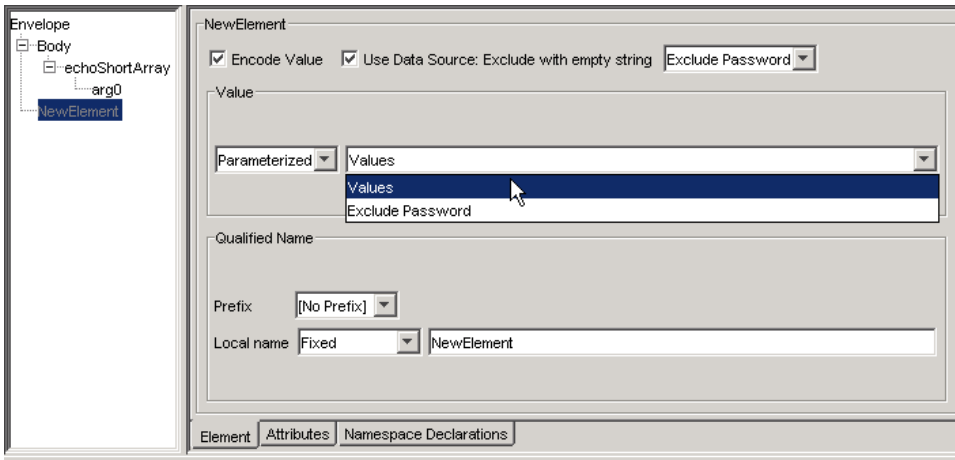
Qualified Name

Prefix: [No Prefix]

Local name: Fixed NewElement

Element | Attributes | Namespace Declarations

5. In the **Value** drop-down boxes, specify the content value of the Element/Attribute by selecting **Parameterized** and the appropriate column that contains the data source values to be sent as part of the message.



When the tool is run, the **password** value from the data source will not be sent as part of the message because it was excluded by the empty string in the **Exclude Password** column that was chosen from the **Use Data Source: Exclude with empty string** drop-down box. To send all of the parameterized values from a data source, do not select the **Use Data Source: Exclude with empty string** check box.